

Volume 5, Issue 1
Spring, 2022

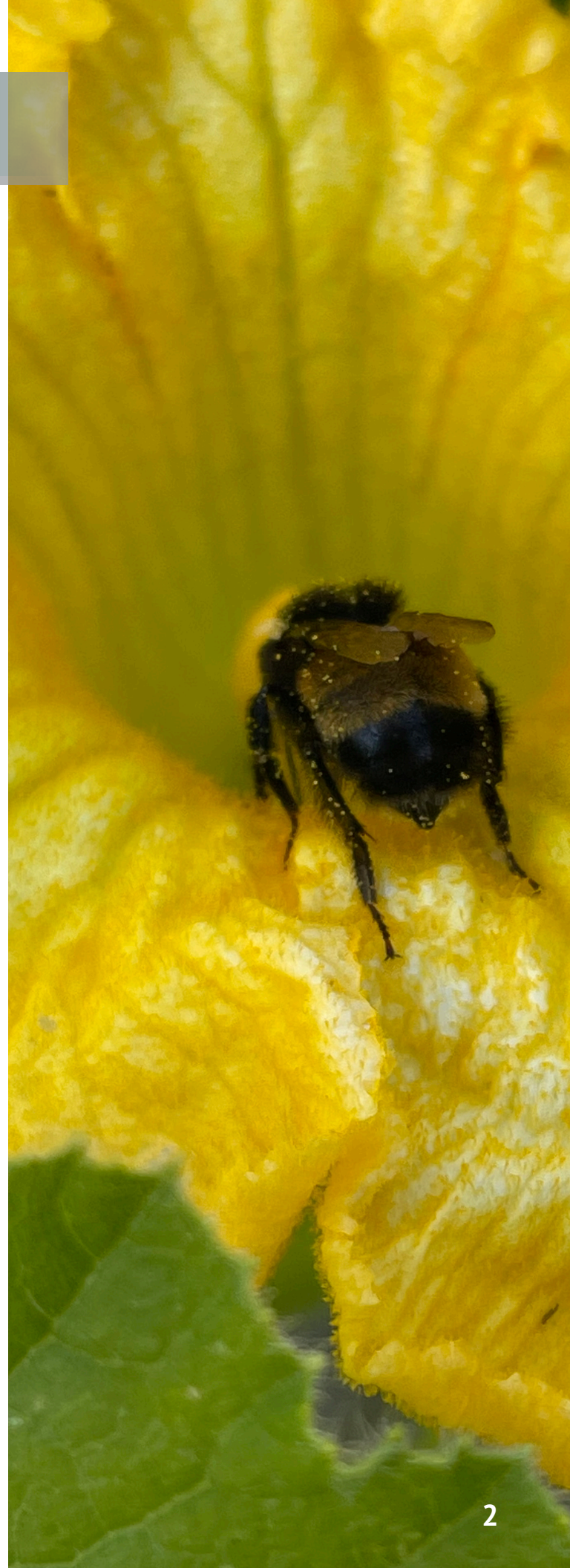


Saddle Hills County

LIVING

INSIDE

Your Council	3
Community Signs Update	7
County News & Updates	9
Bonanza ASP Update	14
Our History - The 20 th Century	15
2022 SHC Photo Contest	16
Meet the Staff	18
Saddle Hills Businesses Rock	19
FAQs: Ask Christine	21



YOUR COUNCIL

The map displays the Municipal District of Sarnow, divided into seven councilor districts (1-7) outlined in red. Each district is associated with a councilor, whose portrait is shown in a circular inset. The councilors are: District 1: Deputy Reeve Dany Roy; District 2: Reeve Alvin Hubert; District 3: Councillor Kristen Smith; District 4: Councillor Ed Armagosa; District 5: Councillor Willis Fitzsimmons; District 6: Councillor Gerry Richard; District 7: Councillor Don Hoffary. The map also shows various geographical features like roads, water bodies, and property boundaries.

COUNCILLOR KRISTEN SMITH

COUNCILLOR ED ARMAGOSA

REEVE ALVIN HUBERT

COUNCILLOR WILLIS FITZSIMMONS

COUNCILLOR GERRY RICHARD

DEPUTY REEVE DANY ROY

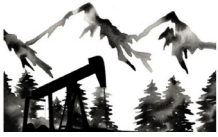
COUNCILLOR DON HOFFARY



ZEDCO
ENERGY SERVICES INC.
780-864-6167

COMBO VAC - STEAMER - SEPTIC VAC
PORTABLE TOILETS - GARBAGE BINS

NaR Environmental Ltd.



NaR ENVIRONMENTAL

780.864.8248 nar.enviro@outlook.com



VEGETATION MANAGEMENT

SPRAYING

MULCHING

SKIDSTEER SERVICES



MOWING

SNOW REMOVAL

COMMUNITY FEATURE

SAVANNA CREATIONS



Q&A WITH LYLA YANISHEWSKI, TREASURER

The Fourth Creek Hall has been being put to good use for many community events and programs. One of the most successful of those has been Savanna Creations Quilting Club. We caught up with Lyla Yanishewski, treasurer of the Fourth Creek Community Association, which runs the hall, and asked her about the quilting club.

When did you first get together?

How did you originally get organized?

We think it was around 30 years ago that the club started. At first, the group got together with members taking turns teaching others various crafts. Over the years, it has evolved into primarily a quilting group, but occasionally members sew other items or create other crafts.

How many quilters are members?

Membership for the 2020-21 fiscal year was 62 members. We have many local members but also many from distant communities including Grimshaw, Berwyn, Beaverlodge, Falher, Fort St. John, Dawson Creek, Grande Prairie and Fort Nelson.

How often do you meet?

We have 3-day quilting sessions at least once per month. Sometimes it's twice per month, especially in the winter. Members are welcome to come to quilt all three days or any part thereof. They are also welcome to come and shop from our inventory.

Is there a charge to join?

\$20 for a yearly membership from September 1 to August 31. Anyone can join - no experience necessary. We have many experienced quilters who are happy to help new quilters.

What happens to the quilts you make?

We donate quilts to many charities, a Canadian soldier, victims of fire, community members who are sick, and many more. Members also create quilts for themselves, their families, and their friends.

Any additional information you'd like to share?

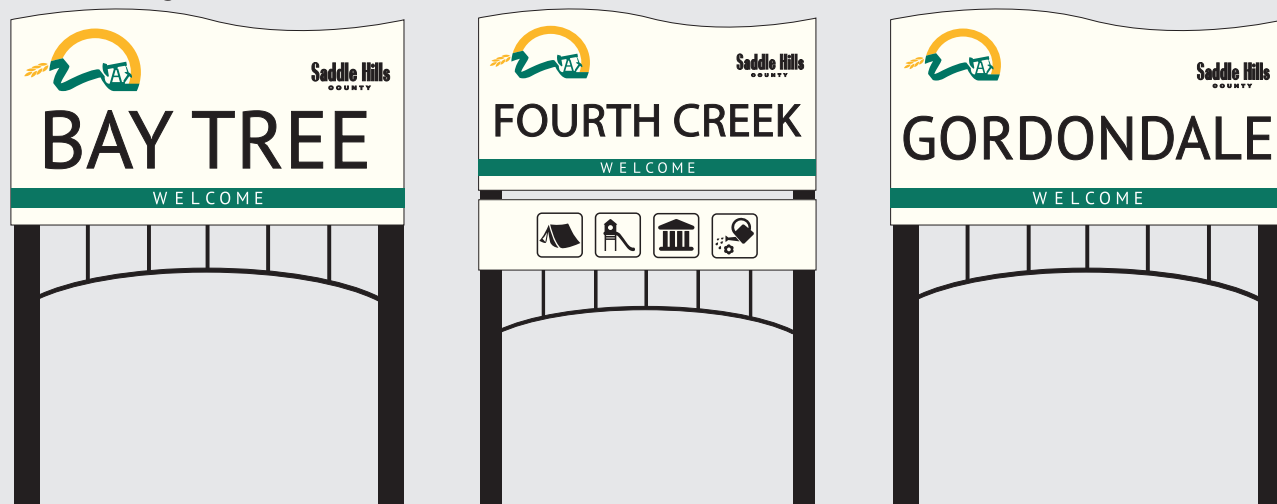
For many years, our club has purchased fabric and notions (sewing supplies) that we keep in storage at the Fourth Creek Hall. This fabric and notions are available for our members to purchase. Members find this very convenient as we are a great distance from fabric stores.

In March 2018, the club purchased a long arm quilting machine with grants from Saddle Hills County and the New Horizons for Seniors Program (a federal grant). This machine allows members to sew the layers of the quilt together using a computer-driven program or manipulating the machine manually. This machine is very popular with our members. It makes assembling the quilts so much faster and easier with professional looking results. Since March 2018, it has been used to sew over 350 quilts.

Our club also hosts an annual quilt show where members and anyone else who is interested bring their quilts or other crafts to display. Attendees vote on their favourite large and small quilts and those with the most votes win prizes. It is always well-attended (June 24 and 25, 2022).

COMMUNITY SIGNS UPDATE

New for 2022



We are thrilled with the uptake from Community Groups for our new signage grants program! As of the of the 2021 deadline the County has received, and approved, three applications for signs, in Bay Tree, Gordondale and Fourth Creek. To apply please visit our website saddlehills.ab.ca/community-signs-grant-program.



At the November 9, 2021 Council Meeting the County also received approval on four new Campground and Recreation signs for Spring Lake, Hilltop Lake and Cotillion Park Campgrounds and Saddle Hills County Slopes. Keep an eye out for all of the new signs as they begin to be installed this year!

BUSINESS FEATURE

NORTHWOODS FARM



Beef, pork, lamb and grass-finished beef, pastured pork and pastured fresh eggs.

(780) 864.7910
www.northwoodsfarm.ca
@northwoodsfarm

Q&A WITH DEBRA LAROCHELLE, OWNER

You describe yourself as regenerative agriculture minded, small family farm. What does that mean?

Northwoods Farm is operated by ourselves and our four young children. When we say we are regenerative agriculture minded, we mean we are farming with the intention of continually improving our land base by observing or working with nature. We approach our farm as an ecosystem. By restoring natural relationships between different elements on our farm, we can improve the health of the whole system - from the micro-organisms in the soil to the food we produce.

Can you tell us how you got into this way of farming? Are you the only one in the area?

It's been a gradual process, which started with our garden and a few cows and a desire to grow our own food with as few chemical inputs as possible. At times, we felt frustrated by some of our failures, because we didn't understand the natural relationships that would help with our goals, and we were unintentionally hindering or, in some cases, destroying those relationships. We were just growing food using conventional methods but without the chemical applications that make those systems work. Eventually, we realized that we needed a shift in our perspective to see consistent results. I spent some time during lockdown studying permaculture and received my Permaculture Design Certificate, which taught me

to observe nature and work with it, instead of against it.

There are other regenerative farms in the Peace Region, and a growing number of conventional farmers that are beginning to adopt some regenerative AG methods as well. The Peace Country Beef and Forage Association does a great job of bringing in educators that speak about soil health and regenerative agriculture principles to farmers in our region.

If you are a regenerative farm, does that mean you have regenerative grazing as well?

During the grazing season we use electric fencing to give the livestock access to smaller sections of the pasture. Then we move them onto fresh grass every few days. The idea is to have them clip each plant then move them to a new patch and allow the previously grazed sections a rest period to regrow. It is more labour intensive, but it prevents them from overgrazing their preferred plants and promotes healthy regrowth.

Can you tell us what you sell?

We sell grass-finished beef, pastured lamb, pastured pork and pastured fresh eggs. We have meat to sell by the package and we also, at times, have whole lambs and beef, by the half or whole. A new product I hope will be available this winter is wool yarn and socks from our sheep flock's annual shearing.

Where do you currently sell your products?

For this summer (2021) we are at Bay Tree Market on 49 on Tuesdays from 11 am to 1 pm. Going into winter we intend to set up online ordering with scheduled delivery trips in the area. In the meantime, the best way to make an order is to contact us by e-mail or through Facebook or Instagram and our website.

Originally published in the Central Peace Signal. The County has partnered with the newspaper to provide feature stories on some of the businesses in our community and the people who make them work.

COUNTY NEWS & UPDATES

OCT. 2021 - APR. 2022

TRAIL CAMERA INSTALLED AT BONANZA TRANSFER STATION

In June Council instructed Administration to proceed with installing a trail camera for video surveillance at the Bonanza Transfer Station Collection Site, following a series of break-ins. This has now been completed.

SUPPORT FOR CN RAIL

Council provided a letter of support for Canadian National's (CN) acquisition of Kansas City Southern (KCS) because of the superior benefits a CNKCS railway would bring by offering faster, safer, cleaner and more direct service for North-South trade.

DOE RIVER SLIDE REPAIR

July 2-3rd, 2020 saw a large rainstorm that caused severe damage to the road by the Doe River Bridge, near Range Road 134. Temporary repairs have now been completed, however a more permanent solution is required.

Council directed Administration to proceed with the repairs at an estimated cost of \$600,000, with funds to come from the Infrastructure Developmental Capital Reserve, which will then be replenished when the Disaster Recovery Funds have been received.

BISON ADDED TO V.S.I PROGRAM

Based on recommendation from the Agricultural Service Board bison will now be included in the County's Veterinary Services Incorporated Program. The program splits costs with the ranchers in our community for pregnancy checks, semen tests, post-mortems and herd/health

disease investigations. To benefit from the program ranchers enter a V.S.I agreement with the County, with membership renewed annually.

SADDLE HILLS COUNTY DECLARES AGRICULTURAL DISASTER

Due to prolonged drought conditions throughout the majority of the County, which has led to low crop yield and quality as well as reduced feed sources, Saddle Hills County declared a state of Agricultural Disaster at the September 14, 2021 Council Meeting.

With light snow cover and lack of soil moisture in the spring, seasonal rainfall was needed to ensure pastures and crops stayed healthy. The drought conditions are causing concern about the availability of quality water sources going into fall/winter. Grain producers specifically are looking at low yields and high grain costs, which is leading to crippling cancellation fees on grain contracts.

Devin Dreeshen, Minister of Agriculture and Forestry, released a statement on July 15, 2021 indicating the push for the activation of the federal AgriRecovery Program. These funds can assist producers in offsetting the cost of added expenses accrued during the season.

'A Declaration of a State of Agricultural Disaster is designed to heighten awareness and collaboration among producers, industry and provincial and federal governments. The County joins a growing number of rural municipalities in Western Canada that have declared states of emergency to draw political attention to the critical conditions of fields and pastures and the availability of livestock feed'

- Alvin Hubert, Reeve

NURSE PRACTITIONER

Saddle Hills County Council have instructed Administration to look into the possibility of hiring a Nurse Practitioner for the area, and the costs associated with this. The aim of this is to give local residents easier access to healthcare, and eradicate some of the wait times associated with the overburdened Spirit River healthcare system.

SENIOR HOUSING UPDATE

Construction on the new Supportive Living and Long-Term Care Facility slated for the Town of Spirit River began in April of this year, according to Grande Spirit Foundation Manager, Steve Madden. The \$24 million project is jointly funded by the Government of Alberta and the Government of Canada.

The facility will sit between 51st and 52nd Street, on land provided by the G5 municipalities, which include Birch Hills County, the MD of Spirit River, Saddle Hills County, the Town of Spirit River and the Village of Rycroft.

The new Spirit River Seniors Lodge is also



planned to include a 24 unit, self-contained apartment building next door, which will replace the current, 60 year old, Pleasantview Lodge.

The Grande Spirit Foundation has conducted an extensive public engagement process, attempting to ensure as much public input as possible, into the design of the project. Three sessions were held in 2021 - January 28, February 4 and February 11 - during which the public was provided the opportunity to discuss how the project, when

complete, will promote healthy living and sustainable communities as it relates to the site context and common amenities of the lodge, as well as neighbourhoods surrounding the project.

It is hoped that by providing multiple levels of housing and healthcare the project will help keep families together and reduce the need to send people to other facilities outside of the Central Peace community. The ultimate aim is for local seniors to be able to age in their own community, surrounded by their loved ones.

UPDATE: Construction has started! On April 5, 2022 Krawford started scraping the ground and the bulk of the excavation started on the week of April 11. This project is very exciting and welcoming; however, we ask bystanders to stay away from the construction site and observe from a safe distance.

Employment: Grande Spirit Foundation has contracted Krawford Construction as their general contractor for construction of the new Seniors Lodge. Krawford Construction has posted tenders through Construction Associations in Alberta, which has received a lot of interest from local contractors. Krawford has indicated that they will likely be looking to hire additional local labourers in the region to support the project in the not so distant future. If you are interested in applying as a labourer, please contact Spirit River Town Office and they will guide you in the right direction.

WOKING HAMLET BEAUTIFICATION

A 4 cubic meter water credit was provided to residents of the Hamlet of Woking, for the months of June and July, to assist in hamlet beautification.

COUNTY FLIES UKRANIAN FLAG

Saddle Hills County is flying the Ukrainian flag outside the office and at County fire halls in support of the Ukrainian people.



The decision was made at the March 8 Regular Council Meeting. Council also decided to match any funds raised by County community organizations prior to a deadline of May 17. Matched funds will be donated to the

Ukrainian Humanitarian Appeal, a joint operation of the Canada-Ukraine Foundation and the Ukrainian Canadian Congress.

VOLUNTEER APPRECIATION BBQ

Saddle Hills County is excited to announce that we will be hosting the Volunteer Appreciation BBQ for 2022. Volunteerism has a huge impact on the spirit of our communities. Saddle Hills County wishes to express their appreciation.

Do you know an organization or individual that should be taking a bow for building their community and making a difference? Does someone in your community generously donate their time and energy and enhance



community spirit? Do you agree that these individuals warrant special recognition?

Saddle Hills County believes strongly in this initiative and looks forward to your nominations. Please submit nominations no later than August 2, 2022. The 'Saddle Hills County Volunteer Award Nomination Form' must be completed and can be obtained from the County office or downloaded from the County website.

The Volunteer Appreciation BBQ will be held at Moonshine Lake Provincial Park in the Group Use Area on August 25, 2022 at 5pm.

ASB UPDATE

OUTREACH

Agricultural Services staff focused heavily on outreach in 2021. Several surveys were conducted throughout the year in order to facilitate communication between County staff and local producers on several important issues, such as crop conditions and elk damages to forage and crops.

The ASB, working alongside a local wildlife biologist and ministerial bodies, composed a letter to the Minister of Agriculture regarding ongoing issues with elk damage being experienced by local producers.

A resolution was developed regarding elk depredation in the County, requesting that money be allocated in order for ungulate surveys to be done annually. This resolution passed at the Regional ASB Conference in November and is being taken to the Provincial ASB Conference in January of 2022.

Staff also worked on developing a stronger social media presence throughout the summer months, hosting a weekly 'Trivia Tuesday', and posting about relevant policies and initiatives to help educate the public on the work carried out by County staff.

EXTENSION EVENTS

MARKET OUTLOOK WEBINAR

In February, we hosted Neil Blue from Alberta AG and Forestry and Anne Wasko from Gateway Livestock to provide information on the upcoming cattle and grain markets. Ten producers attended, representing a mixture of both livestock and crop producers from the area.

GENERATIONAL FARMING WEBINAR WITH MERLE GOODE

In October, we hosted a second webinar with Merle Goode, this time focusing on generational farming. This webinar discussed options, steps and strategies to address problems such as decision control, financial viability and off-farm sibling fairness. This presentation was a success with many ratepayers returning to watch Merle speak for a second time.

DOWN IN THE DIRT CROP PRODUCTION WEBINAR SERIES

In November, we hosted four webinars aimed at crop producers in Saddle Hills County. Dr. Ross McKenzie, formerly of Alberta Agriculture, presented on soil fertility and understanding soil test results. Dr. Charles Geddes of Agriculture and Agri-Food Canada spoke about herbicide resistant weeds and offered insight into effective herbicide resistant weed management. Dr. Kelly Turkington from Agriculture and Agri-Food Canada, and Dr. Shelly Barkley of Alberta Agriculture, presented on crop disease and pest species common to the Peace Country, identification and best management practices.

RECOMMENDATIONS FOR 2022

In 2021, the majority of the focus during the spring and summer months was dealing with historically problematic weed locations early. As the summer continued, the hot and dry weather made herbicide application and control of seedlings/small weeds difficult. After the heat wave passed, herbicide applications took place.

Going forward, work needs to be done educating ratepayers on the various agricultural policies at the County and improving ratepayer interactions

and responses in regards to stubborn weed issues. In 2022 more focus will need to be put on encouraging development of agricultural programs within the County, continuing aggressive right-of-way vegetation management, working with recurring problem weed areas and expanding pest monitoring to include other pest/disease species such as lygus and sclerotinia.

Going forward, Agricultural Services will continue to strive towards achieving goals outlined in the 2020-2024 Agricultural Service Board Strategic Plan, such as developing and delivering collaborative environmental stewardship initiatives within the grain and livestock industry in Saddle Hills County and participating in opportunities for collaboration and inter-municipal initiatives at the federal, provincial, and municipal levels.

WANT MORE LOCAL NEWS?

Saddle Hills County landowners can sign up for a weekly copy of the Central Peace Signal, to be delivered directly to their mailbox or home.

Call the County office at **780.864.3760** to request your copy.

**ELECTRONICS
EXPANDED**
WE'RE READY ALBERTA!



**Alberta
recycling**
LEARN MORE AT
ARMAePilot.com



OPENS: May 22nd, 2022
10am - 8pm everyday
(incl. holidays)

780.864.1868

Annie's Greenhouse

TWP 820 & RR 80, Fourth Creek, AB

Bedding Plants (flowers and vegetables), hanging baskets, perennials, fruit bushes, strawberry roots and a few new items!

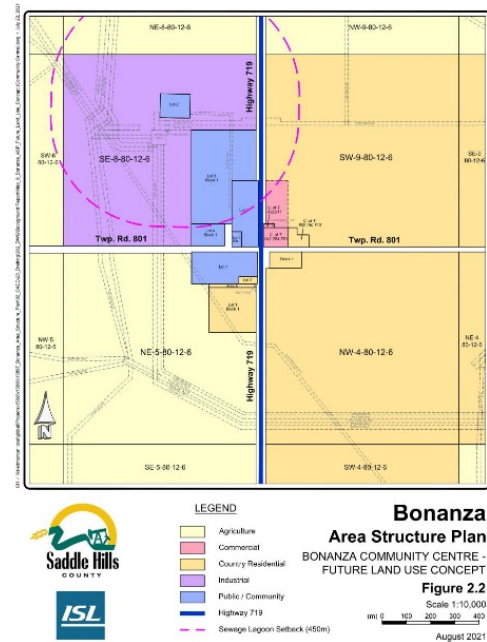
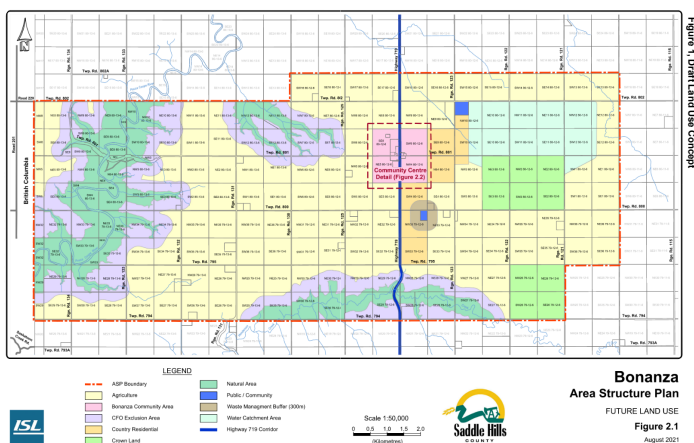


BONANZA ASP UPDATE

PHASE 2 AREA STRUCTURE PLAN ENGAGEMENT SUMMARY

INTRODUCTION

Over several months, the County prepared an Area Structure Plan (ASP) for the Bonanza Area. The purpose of the ASP is to help guide long-term future growth and development of the area.



ENGAGEMENT PROCESS

Beginning in Spring 2021, residents of Saddle Hills County were provided an opportunity to participate in the first phase of the project through an Online Learning Q&A Session (May 27) and an Online Survey (May 13 - June 10). This phase of the project focused on gathering feedback regarding residents' vision for the plan area and what they felt was important to consider when planning for the future of the area. Feedback gathered during this phase was reviewed and used to inform the development of a draft ASP.

Phase 2 of the project, which commenced in the Summer of 2021, focused on the review of the draft ASP. Copies of this were made available to residents for review on the County's website, and through an Online Survey (available September 19 - October 5). This survey provided an opportunity

for participants to provide specific feedback on elements of the ASP. In addition to the Online Survey, an in-person Open House was held at the Bonanza Community Hall on September 23, from 3-7pm, so residents could ask questions and provide their feedback.



This information was collected, from both the open house and survey, and feedback published on the County website. The full summary is available online or a copy can be requested from the County office.

OUR HISTORY

The 20th Century

Adapted from a piece by Chloe Crisanti

The first two decades of the 20th century were vital in the development of communities in Peace River Country. Alberta joined the confederation in 1905 while WWI ravaged Europe. The area had, of course, been settled before this time, but a combination of veterans returning from the war, European immigrants fleeing an increasingly unstable political climate, the increasing price of land in southern Alberta, rising domestic and American interests in the inexpensive lands, and the continued construction of the railroads brought a flood of new homesteaders into Peace River Country.



The railway passenger cars (nicknamed ‘colonist cars’) brought waves of European settlers from the coast, many of them of Ukrainian and German origin. It is these communities that helped build the region’s Orthodox, Roman Catholic and Lutheran communities, among others. To this day the area is home to a diverse range of religious communities because of this history. Rail was only one method of travel into the region, with many settlers also arriving by horse-drawn wagons or automobiles. As a result of this growth in population many of the old log structures, built by past settlers, were re-

purposed for use as schools and community halls.

Settlers would supplement their ranching and agricultural pursuits with hunting and trapping, and lumber operations began to crop up, with the Buffalo Lakes Lumber Company Ltd., near Woking, being one of the first in the area. As well as providing materials for local houses the lumber operations and sawmills shipped product east and south, energizing the economy in the area, and continuing the tradition of Alberta as a staples economy.

Access to healthcare at this time was limited. People relied on travelling dentists and Dr. Reavely of Spirit River was the only doctor servicing the entire area until the mid 1930’s. The fetching of the Dr. to aid women in labour was so ubiquitous that it would later be re-enacted in parades.

In 1941, the Grey Nuns arrive from Ottawa and established the Holy Cross Hospital in Spirit River, providing up-to-date facilities and equipment. The Sisters served the area until their departure in the 1970’s, at which time healthcare service was provided by the government, which built the Central Peace General Hospital in the 1960’s.

Though the region was devastated by the Great Depression of the 1930’s, the region recovered and prospered with the spread of oil and gas extraction in the region, an industry that remains vital in the County to this day.

Saddle Hills County Photo Contest



APPLICATIONS ARE NOW OPEN FOR 2022

BUSINESS FEATURE

CHINOOK VALLEY GOLF COURSE



76329 Hwy 731, Woking, AB
(780) 774.3838
kaylareiman@live.ca
www.chinookvalley.ca

Q&A WITH KAYLA & RANDALL REIMAN, OWNERS

How long has the Chinook Valley Golf Course been around?

The course was finished being built in 1991, and officially opened in 1992. Chinook Valley has had a few different owners throughout the years.

When is the golf course open?

It is all weather-dependent, but it's usually sometime in the last week of April to the first week of May. Once we have an opening date it's posted on our website and Facebook page.

What are the most challenging holes on the course?

This can vary on the skill level of the golfer. Hole No. 1 can be challenging for beginners as you encounter two water hazards, but for the average golfer the course is more challenging the further along you get. Hole No. 9 is a tough hole to finish your round.

Do you host tournaments?

We host a variety of tournaments throughout the summer - everything from charity events to company outings. Anyone can book a tournament or event. We have a tournament information package available to those interested in booking an event with us. We only host a couple of our own tournaments, such as the Couples and the Farmers and Merchants. Most of our tournaments are organized by other groups, such as the Kinettes Hole-in-One, Compassion House, Central Peace Oilmen's, Central Peace Firefighters and the Birchcliff Charity Golf Tournament for STARS.

What are your leagues like?

The leagues are run independently of the golf course by volunteers, and we assist them in any way we can. We offer discounted green fees to any non-members participating in league plats as well as meal and drink specials. Each league determines what they will charge for their fees, and this money goes towards prizes and a year-end tournament for participants. Ladies League is on Tuesday evenings, and Men's league is on Thursday evenings. Both leagues tee off at 6 pm. Seniors League is every Wednesday starting at 10 am. The leagues are open to the public, and further information is continually updated on our Facebook page. We also run a Junior Gold program every year. It runs Monday after school, for 5 weeks. We've been fortunate enough to have the Central Peace Oilmen's Association sponsor the program in the past as well as purchase golf clubs for kids to use at no cost when they come golfing.

Does one have to be a member in order to visit the restaurant in the Club House?

Not at all. Everyone is welcome! Our restaurant is open to the public, with our hours starting at 8:30 am daily, in season. If you're short on time we can do takeout orders as well. We also cater events at the clubhouse, such as birthday parties, which we have a buffet style menu available for.

You also have a camping area. Are these for members only?

We do have a camping area that is open to the public. In this area we have power-only sites as well as fully serviced sites. These lots can be reserved by the night, week, or month. There is also an area that is reserved for permanent campsites only, and these sites are paid for annually and require a yearly membership.

Originally published in the Central Peace Signal. The County has partnered with the newspaper to provide feature stories on some of the businesses in our community and the people who make them work.

MEET THE STAFF

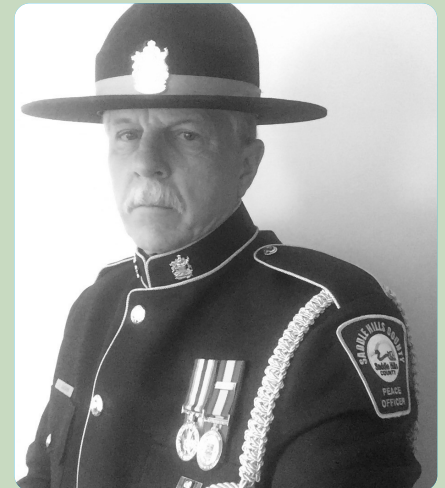


CARY MERRITT, CHIEF ADMINISTRATIVE OFFICER (CAO)

Cary has been at Saddle Hills County for over seven-and-a-half years, with two-and-a-half of those years as CAO. He previously worked as Director of Corporate Services and Manager of Finance. He has a diversified career in both the government and private sectors. He worked in hi-tech, building materials and managed a large co-operative. His government experience has ranged from municipal to provincial governments, and he even spent time as a mayor.

NORM BACKER, PEACE OFFICER

Norm has worked as a Community Peace Officer for Saddle Hills County since September 06, 2016. Prior to his service at the County he worked with the Alberta Government at Calling Lake, Long Lake, St. Paul, Wetaskiwin, Grande Prairie, Olds, Lac La Biche and Spirit River as a Special Constable and Wildlife Officer. Norm looks forward to working with the Saddle Hills County community with their Safe Roads/Safe Community/ Safe People and Vision 2022 program.



DARREN LUBECK, MANAGER OF ENVIRONMENTAL SERVICES

Darren has worked for Saddle Hills County since 2017 and has worked in the water and wastewater industry, including Clear Hills County and MD of Greenview, for many years.

He looks forward to expanding the rural potable water program and working with County residents to gain access to clean water for them and their families.

SHC BUSINESSES ROCK

Saddle Hills County has a strong and dynamic business community comprised of small, medium and big operations in agriculture, oil and gas and forestry, as well as a number of small businesses serving these industries and the general public. The County has partnered with the Central Peace Signal newspaper to provide feature stories on some of the businesses in our community and the people who make them work. You can find the full business features on our website (search 'Business Features'). We will be showcasing some of these businesses in each issue of Saddle Hills County Living.

If you own a business in Saddle Hills County and would like to advertise with us, free of charge, please contact our Communications Coordinator at the County office on 780.864.3760, ext. 116, through social media or at communications@saddlehills.ab.ca.

BAY TREE MARKET ON 49



On Tuesday, June 2, 2020, vendors descended on the Bay Tree skating rink, just a tad east from the Bay Tree Store, for the season opener of the first-ever Bay Tree Market on 49, which Heather Porrill, who owns Buttery Bites Caramels, has been spearheading with the sponsorship of the Bonanza Agricultural Society. An Alberta-approved farmer's market, Bay Tree Market on 49 takes place from 11am to 1pm every Tuesday from June to September.

Bay Tree, AB (across from the Bay Tree General Store)
(780) 353.3055 | baytreemarketon49@gmail.com | [@BayTreeMarketon49](https://www.instagram.com/BayTreeMarketon49)

DAISY HILL HOME & GARDEN



Annuals, succulents, hanging baskets, veggies, and a few herbs as well as some planters and gardening decor. Open 7 days a week from 10 am to 7pm (BC time)
- From Dawson Creek: Instead of going left to the Bay Tree Store, you take a right hand turn, follow the road to the right and go all the way to the top of the hill to the last house on the right.

13117 Twp Rd. 790, Bay Tree, AB
(250) 784.7034 | braatenjoanne@gmail.com | [@DaisyHillHomeAndGarden](https://www.instagram.com/DaisyHillHomeAndGarden)

DANDELION ON THE PRAIRIE

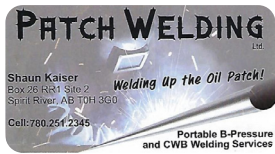


Dandelion on the Prairie is a monthly subscription box currently marketed towards women with the possibility of having one for men in the future. The box contains items made by Canadians from all over Canada. I aim to find items that are sustainably, ethically or naturally made. Each box will contain 3-5 items. Products can be anything from beauty, self-care, home decor, snacks, scarves, to teas and coffees.

Silver Valley, AB

dandelionontheprairie@gmail.com | www.dandelionontheprairie.ca | @dandelionontheprairie

PATCH WELDING



Shaun Kaiser has been working as a welder for over 17 years and started contracting in 2010. He is available all over Alberta and Northeastern BC offering Portable B-Pressure and CWB Welding Services.

Fourth Creek, AB

(780) 251.2345 | patchwelding@hotmail.com

TRUE BALANCE TIRES



It was a Saturday. Ron Dyck didn't realize until past mid-afternoon that one of the tires of his vehicle was deflated. He investigated his options and then decided to drive 90-95 kilometers to Dawson Creek, instead of Spirit River, a 70-kilometer distance from where he was in Silver Valley. This day being a Saturday, the Dawson Creek location was the one that stayed open for a full day until 5pm.

Silver Valley, AB

(780) 361.2660 | truetirebooks@gmail.com

FAQ'S: ASK CHRISTINE



Christine Elliott is a beloved resident and employee of the County, manning our reception and phone lines and helping with all of our residents' questions and enquiries.

If you have a question Christine is always happy to help you find the answer!

HOW DO I CHANGE MY MAILING ADDRESS?

If you move please let us know your new address so that we can make sure there are no delays in getting any important notices to you. You can call us at the front desk at (780) 864.3760.

HOW CAN I KEEP UP TO DATE ON COUNTY & COMMUNITY EVENTS?

County events are posted on our social media channels and our website. You can go to calendar.saddlehills.ab.ca to see our scheduled upcoming events, including webinars, fairs, meetings etc.

HOW DO I APPLY FOR A DITCHING PERMIT?

If you would like to complete ditching work in the County you will need to obtain a permit from our Operations Department. Permits are free but are required to ensure the protection of County and Provincial infrastructure and privately owned land.

Please call (780) 864.3760 or email operations@saddlehills.ab.ca

WHO DO I CALL TO HAVE ROADKILL REMOVED?

To have roadkill removed from highways and roads in Alberta please call 310-0000 and you will be directed to the correct government department to have this dealt with. If you have a collision with an animal on the Highway and are injured always dial 911 first.

If you have a question you'd like Christine to answer please call us on (780) 864.3760 or email communications@saddlehills.ab.ca and your question may be featured in the next issue.



JOIN US ON INSTAGRAM!

Do you have an amazing photograph or video of the County you'd like to share? Or interested in some weekly agricultural trivia? Follow us [@saddlehillscounty](https://www.instagram.com/saddlehillscounty) to have your work or business featured on our page and check out all our latest updates!



Junction of Highway 49 and Highway 725, RR 1, Spirit River, Alberta, Canada, T0H 3G0

Phone: (780) 864-3760 | Fax: (780) 864-3904 | Toll Free: 1 (888) 864-3760

Monday to Friday 8:15 AM to 4:30 PM



www.saddlehills.ab.ca



[@saddlehillscounty](https://www.facebook.com/saddlehillscounty)



[@saddlehillsab](https://twitter.com/saddlehillsab)



[@saddlehillscounty](https://www.instagram.com/saddlehillscounty)