



a division of Englobe

Addendum # 01

**To the Contract Specifications and Drawings for:
Saddle Hills County
Bonanza Distribution Pumps Upgrading**

**MPE a division of Englobe
Suite 101, 10630 – 172 Street
Edmonton, AB T5S 1H8**

February 14, 2025

File: 5201-008-00

Precedence

This Addendum forms an integral part of the Contract Specifications and Drawings covering all aspects of this job and is to be read in conjunction therewith. However, should points arise which are at variance, this Addendum shall take precedence, unless otherwise clarified by the Engineer.

Purpose

This addendum provides specific clauses to add to and/or amend the specifications and/or drawings.

1. Closing Date Extension

Bid Closing Date is extended to February 27, 2025.

2. Section 00200 – Instruction to bidders

DELETE:

Clause 24: CONTRACT TIME (SCHEDULING AND COMPLETION DATE)

Clause 25: BID FORM SUPPLEMENT– SCHEDULE OF RATES FOR UNCLASSIFIED WORK

3. Section 00431 – Schedule of Prices

Clarification:

The online Schedule of Prices form in Bids and Tenders has been updated.

4. Section 01280 – Measurement and Payment Schedule

ADDITION:

.8 Mechanical Chloramine Modification (Ksituan) – Item A.9

- .1 Scope: Includes all labor, materials, and equipment required to modify the chloramine system at the Ksituan Water Treatment Plant. This involves reconfiguring the ammonia solution injection system and the sodium hypochlorite injection system to optimize performance. The work includes the removal and replacement of necessary piping, valves, and fittings, ensuring compatibility with the modified system. Adjustments to the chlorine analyzer system are also required to ensure accurate dosing and operational efficiency. All necessary wall penetrations will be made, and voids will be filled with approved fire-stopping materials, followed by the installation of aluminum sheet metal escutcheons. The completed system will be tested, commissioned, and calibrated to meet project specifications, and any deficiencies will be addressed before final acceptance.
- .2 Measurement: Shall not be measured for payment.
- .3 Payment: Lump Sum payment.

.9 Electrical Chloramine Modification (Ksituan) – Item A.10

- .1 Scope: Includes, but is not limited to, all electrical work necessary to support the chloramine system modifications. This includes installing new wirings, conduits, and power supplies to accommodate changes in the injection and analyzer systems. The control systems will be integrated into the existing SCADA network, requiring programming and reconfiguration of control panels, sensors, and alarms to align with the revised dosing operations. Electrical modifications will comply with all applicable codes, ensuring proper grounding and protective measures. Functional testing and troubleshooting will be conducted to verify the reliability of the electrical components. The final scope also includes the provision of as-built drawings, updated wiring diagrams, and relevant documentation to reflect the modifications made.
- .2 Measurement: Shall not be measured for payment.
- .3 Payment: Lump Sum payment.

5. Section 01790 – Operation and Maintenance Manuals

DELETE: Clause 5.3

ADDITION: Clause 5.3

Covers to read as follows:

Operation and Maintenance
Manual

Saddle Hills County

Bonanza Distribution Pumps Upgrading

{Date}

Prime Consultant: MPE a division of Englobe

General Contractor:

Mechanical Contractor:

Electrical Contractor:

The Spine to read as follows:

Operation and Maintenance
Manual

Saddle Hills County

Bonanza Distribution Pumps Upgrading

{Date}

6. Section 15000 – Mechanical Special Provisions

DELETE: Clause 15.14.1

ADDITION: Clause 15.14.1

Goulds 10WALC – 6 Stg. as supplied by Delta Water Products Sales Inc ph.
(780) 426-6991 – Mike McDonald

ADDITION: Clause 16 – Circulator Pumps SAP0770 AND SAP0780

- .1 Unless stated herein or waived in writing by the Engineer, pump construction, materials, methods, and performance shall conform to industry standards for water circulation pumps.
- .2 Stainless steel wet rotor circulator pump compatible with potable water applications.
- .3 Cast stainless steel housing, composite impeller, and NSF/ANSI 372 approved construction.
- .4 Installation as indicated in the drawings.
- .5 Ceramic shaft with composite bearings.
- .6 Maximum flow rate of 7.5 m³/h (33 GPM).
- .7 Maximum head of 8.8 m (29 ft).
- .8 Outlet size: 20mm.

- .9 Maximum system pressure of 10 bar (145 PSI).
- .10 Driven by a three-speed, 2-pole, single-phase motor with TEFC enclosure.
- .11 Motor ratings: 115V, 60Hz, power up to 197W, with internal capacitor.
- .12 Maximum liquid temperature of 110°C (230°F), minimum liquid temperature of 2°C (36°F).
- .13 Complete with removable check valve and GF 15/26 flange connections.
- .14 Acceptable products:
 - .1 Grundfos UPS 26-99 SFC.

7. Drawings Revisions

MODIFICATION:

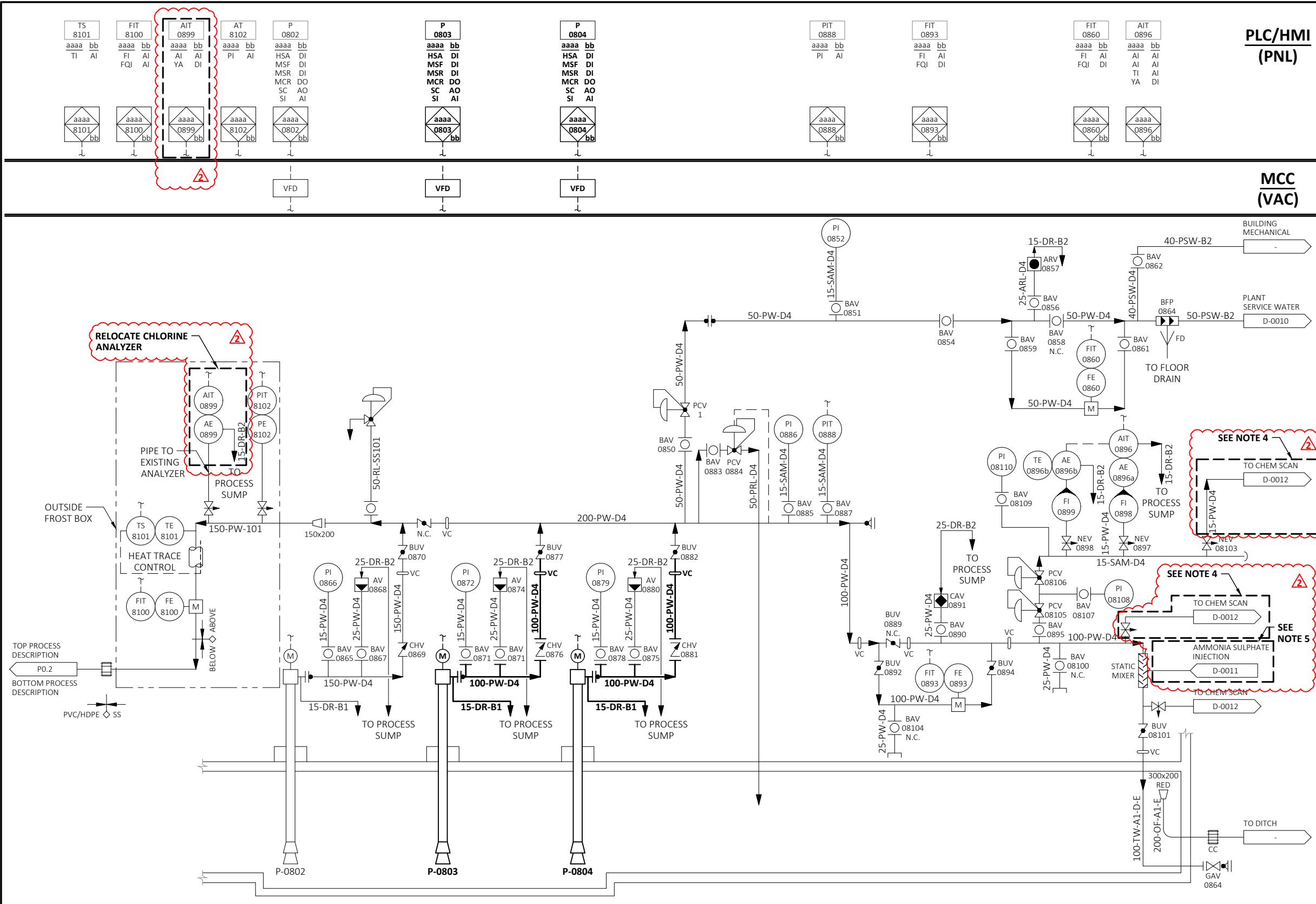
<u>Drawings Revision</u>		
<u>Drawings Number</u>	<u>Delete</u>	<u>Replace with</u>
P1.1 ADD01	Issue 1: For Tender	Issue 2: For Addendum 1
P1.2 ADD01		Issue 1: For Addendum 1
P1.3 ADD01		Issue 1: For Addendum 1
P2.1 ADD01	Issue 1: For Tender	Issue 2: For Addendum 1
P1.10 ADD01		Issue 1: For Addendum 1
P1.11 ADD01		Issue 1: For Addendum 1
P2.10 ADD01		Issue 1: For Addendum 1
E1.2 ADD01	Issue 1: For Tender	Issue 2: For Addendum 1
E2.1 ADD01	Issue 1: For Tender	Issue 2: For Addendum 1
E2.4 ADD01		Issue 1: For Addendum 1
E3.2 ADD01		Issue 1: For Addendum 1

A complete set of revised drawings reflecting all the changes is attached to this Addendum.

END OF ADDENDUM

DIGITAL DRAWINGS BEST VIEWED IN ADOBE ACROBAT READER

THIS DRAWING MAY HAVE BEEN MODIFIED FROM ITS ORIGINAL SIZE. ALL SCALE NOTATIONS INDICATED ARE BASED ON 11"x17" FORMAT DRAWINGS



P-0802
 HIGH FLOW PUMP
 TYPE: VERTICAL TURBINE
 SIZE: 150 OUTLET
 FLOW: 17 L/s
 HEAD: 55 m
 POWER: 20HP/3PH/600V/60Hz

P-0803 AND P-0804
 DISTRIBUTION PUMPS
 TYPE: VERTICAL TURBINE
 SIZE: 100 OUTLET
 FLOW: 21 L/s
 HEAD: 66 m
 POWER: 25HP / 3PH / 575V / 60Hz

DESIGN CRITERIA

PLC/HMI (PNL)
MCC (VAC)

- NOTES:**
1. ALL BOLD ITEMS INDICATE WORK TO BE DONE AND ALL LIGHT ITEMS INDICATE EXISTING CONDITIONS.
 2. ALL ELEVATIONS IN METRES, DIMENSIONS AND PIPE SIZES IN MILLIMETRES UNLESS NOTED OTHERWISE.
 3. FOR INFORMATION REGARDING GENERAL NOTES, UTILITIES, SYMBOLS AND ABBREVIATIONS REFER TO THE CIVIL LEGEND AND CIVIL ABBREVIATIONS DRAWINGS.
 4. DISCONNECT UPSTREAM CHEMSCAN SAMPLE CONNECTIONS AT THE HEADER. CAP SAMPLE PORTS AS REQUIRED.
 5. DISCONNECT AMMONIA SOLUTION INJECTION POINT AND CONNECT TO EXISTING INJECTION POINT DOWNSTREAM OF UV DISINFECTION UNITS.

THE EXISTENCE, LOCATION AND ELEVATION OF ALL UTILITIES AS SHOWN ON ANY PLANS MAY BE BASED ON INFORMATION RECEIVED FROM THE RESPECTIVE AUTHORITIES AND ARE NOT GUARANTEED BY THE ENGINEER. NO RESPONSIBILITY IS IMPLIED OR ASSUMED BY THE ENGINEER AS TO THE LOCATION AND ELEVATION OR ANY OMISSIONS. THE CONTRACTOR OR ANY THIRD-PARTY IS RESPONSIBLE FOR DETERMINING THE EXISTENCE, LOCATION AND ELEVATION OF ALL SUCH UTILITIES AND MUST CONTACT THE VARIOUS UTILITY COMPANIES FOR ON SITE INFORMATION PRIOR TO COMMENCEMENT OF ANY OPERATIONS.

25-02-14	FOR ADDENDUM 1	
25-01-28	FOR TENDER	
ISSUE	YY-MM-DD	REVISION

PERMIT TO PRACTICE MPE, a division of Englobe Corp. Signature: _____ APEGA ID: 77905 Date: FEB 14, 2025 PERMIT NUMBER: P 7841 The Association of Professional Engineers and Geoscientists of Alberta (APEGA)	
--	--



SADDLE HILLS COUNTY

BONANZA DISTRIBUTION PUMPS UPGRADING PROCESS
PROCESS AND INSTRUMENTATION DIAGRAM
BONANZA WTP

DESIGNED	I.A.K., S.M.	JOB	5201-008-00
DRAWN	J.M.M.	SCALE	NTS
DATE	JANUARY 2025	DRAWING	P1.1 ADD01

DIGITAL DRAWINGS BEST VIEWED IN ©ADOBE ACROBAT READER

THIS DRAWING MAY HAVE BEEN MODIFIED FROM ITS ORIGINAL SIZE. ALL SCALE NOTATIONS INDICATED ARE BASED ON 11"x17" FORMAT DRAWINGS

SAP
0770
aaaa bb
HSA DI
MSR DI
MSF DI
MCR DO

AIT
0899
aaaa bb
AI AI
YA DI

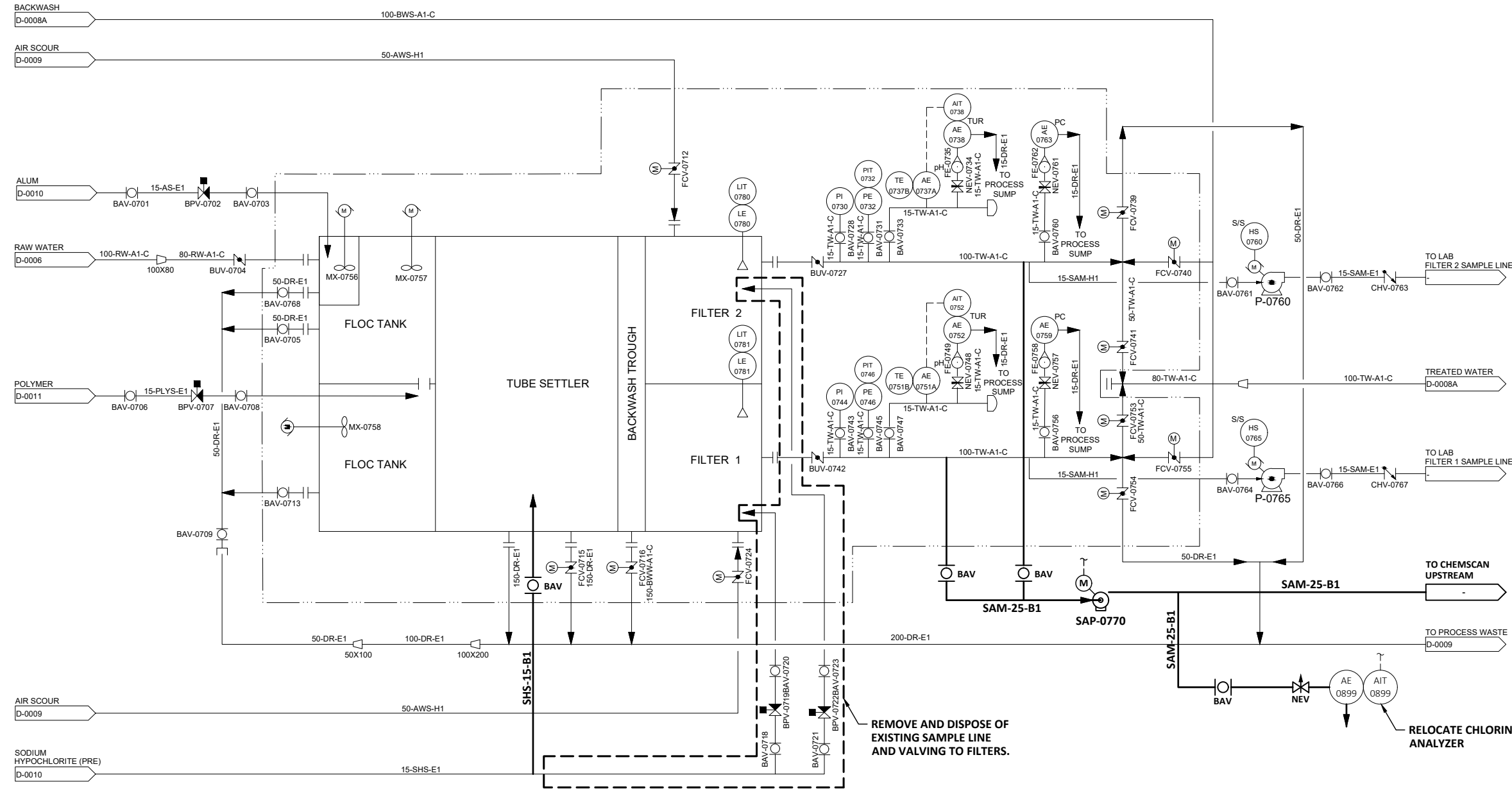
PLC/HMI
(PNL)



MCC
(VAC)

NOTES:

1. ALL BOLD ITEMS INDICATE WORK TO BE DONE AND ALL LIGHT ITEMS INDICATE EXISTING CONDITIONS.
2. ALL ELEVATIONS IN METRES, DIMENSIONS AND PIPE SIZES IN MILLIMETRES UNLESS NOTED OTHERWISE.
3. PUMPS TO BE INSTALLED PER MANUFACTURER'S RECOMMENDATIONS.
4. FOR INFORMATION REGARDING GENERAL NOTES, UTILITIES, SYMBOLS AND ABBREVIATIONS REFER TO THE CIVIL LEGEND AND CIVIL ABBREVIATIONS DRAWINGS.



THE EXISTENCE, LOCATION AND ELEVATION OF ALL UTILITIES AS SHOWN ON ANY PLANS MAY BE BASED ON INFORMATION RECEIVED FROM THE RESPECTIVE AUTHORITIES AND ARE NOT GUARANTEED BY THE ENGINEER. NO RESPONSIBILITY IS IMPLIED OR ASSUMED BY THE ENGINEER AS TO THE LOCATION AND ELEVATION OR ANY OMISSIONS. THE CONTRACTOR OR ANY THIRD-PARTY IS RESPONSIBLE FOR DETERMINING THE EXISTENCE, LOCATION AND ELEVATION OF ALL SUCH UTILITIES AND MUST CONTACT THE VARIOUS UTILITY COMPANIES FOR ON SITE INFORMATION PRIOR TO COMMENCEMENT OF ANY OPERATIONS.

25-02-14	FOR ADDENDUM 1
ISSUE	REVISION

PERMIT TO PRACTICE
MPE, a division of Englobe Corp.
Signature: _____
APEGA ID: 77905
Date: FEB 14, 2025
PERMIT NUMBER: P 7841
The Association of Professional Engineers and Geoscientists of Alberta (APEGA)



SADDLE HILLS COUNTY

**BONANZA DISTRIBUTION PUMPS UPGRADING PROCESS
PROCESS AND INSTRUMENTATION DIAGRAM
BONANZA WTP**

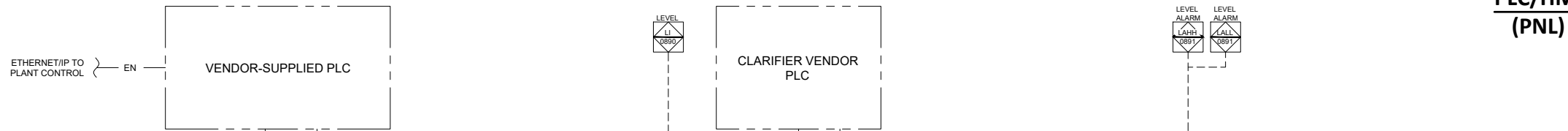
SAP-0770
SAMPLE PUMP
TYPE: CIRCULATOR PUMP
SIZE: 20mm OUTLET
FLOW: 0-7.5 m3/h
HEAD: 0-8.8 m
POWER: ½ HP/ 60Hz / 1 PHASE / 115 VAC

DESIGN
CRITERIA

DESIGNED	I.A.K., S.M.	JOB	5201-008-00
DRAWN	J.M.M.	SCALE	NTS
DATE	JANUARY 2025	DRAWING	P1.2 ADD01

DIGITAL DRAWINGS BEST VIEWED IN ADOBE ACROBAT READER

THIS DRAWING MAY HAVE BEEN MODIFIED FROM ITS ORIGINAL SIZE. ALL SCALE NOTATIONS INDICATED ARE BASED ON 11"x17" FORMAT DRAWINGS

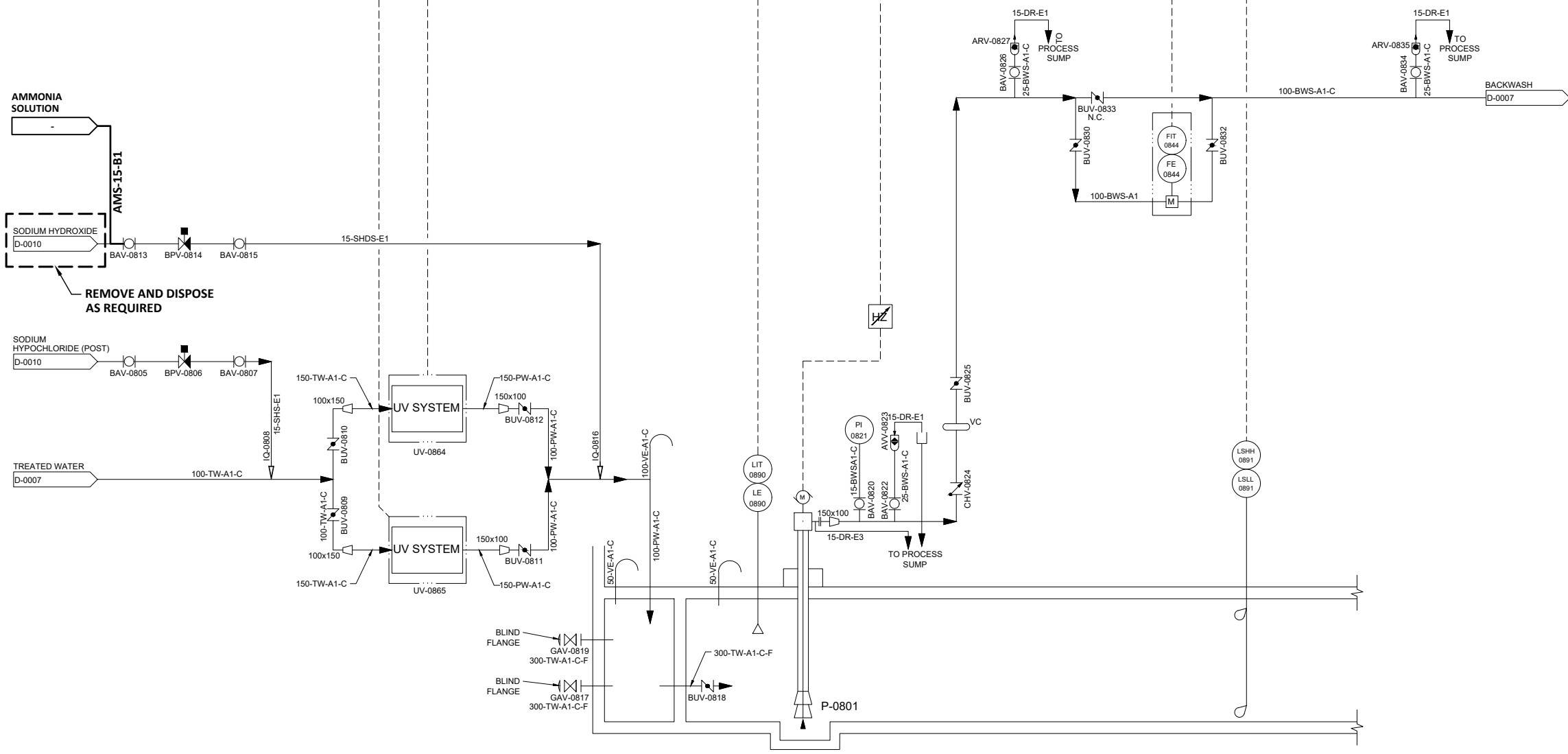


**PLC/HMI
(PNL)**

**MCC
(VAC)**

NOTES:

1. ALL BOLD ITEMS INDICATE WORK TO BE DONE AND ALL LIGHT ITEMS INDICATE EXISTING CONDITIONS.
2. ALL ELEVATIONS IN METRES, DIMENSIONS AND PIPE SIZES IN MILLIMETRES UNLESS NOTED OTHERWISE.
3. PUMPS TO BE INSTALLED PER MANUFACTURER'S RECOMMENDATIONS.
4. FOR INFORMATION REGARDING GENERAL NOTES, UTILITIES, SYMBOLS AND ABBREVIATIONS REFER TO THE CIVIL LEGEND AND CIVIL ABBREVIATIONS DRAWINGS.



THE EXISTENCE, LOCATION AND ELEVATION OF ALL UTILITIES AS SHOWN ON ANY PLANS MAY BE BASED ON INFORMATION RECEIVED FROM THE RESPECTIVE AUTHORITIES AND ARE NOT GUARANTEED BY THE ENGINEER. NO RESPONSIBILITY IS IMPLIED OR ASSUMED BY THE ENGINEER AS TO THE LOCATION AND ELEVATION OR ANY OMISSIONS. THE CONTRACTOR OR ANY THIRD-PARTY IS RESPONSIBLE FOR DETERMINING THE EXISTENCE, LOCATION AND ELEVATION OF ALL SUCH UTILITIES AND MUST CONTACT THE VARIOUS UTILITY COMPANIES FOR ON SITE INFORMATION PRIOR TO COMMENCEMENT OF ANY OPERATIONS.

25-02-14	FOR ADDENDUM 1
ISSUE	REVISION

PERMIT TO PRACTICE
MPE, a division of Englobe Corp.
Signature: _____
APEGA ID: 77905
Date: FEB 14, 2025
PERMIT NUMBER: P 7841
The Association of Professional Engineers and Geoscientists of Alberta (APEGA)



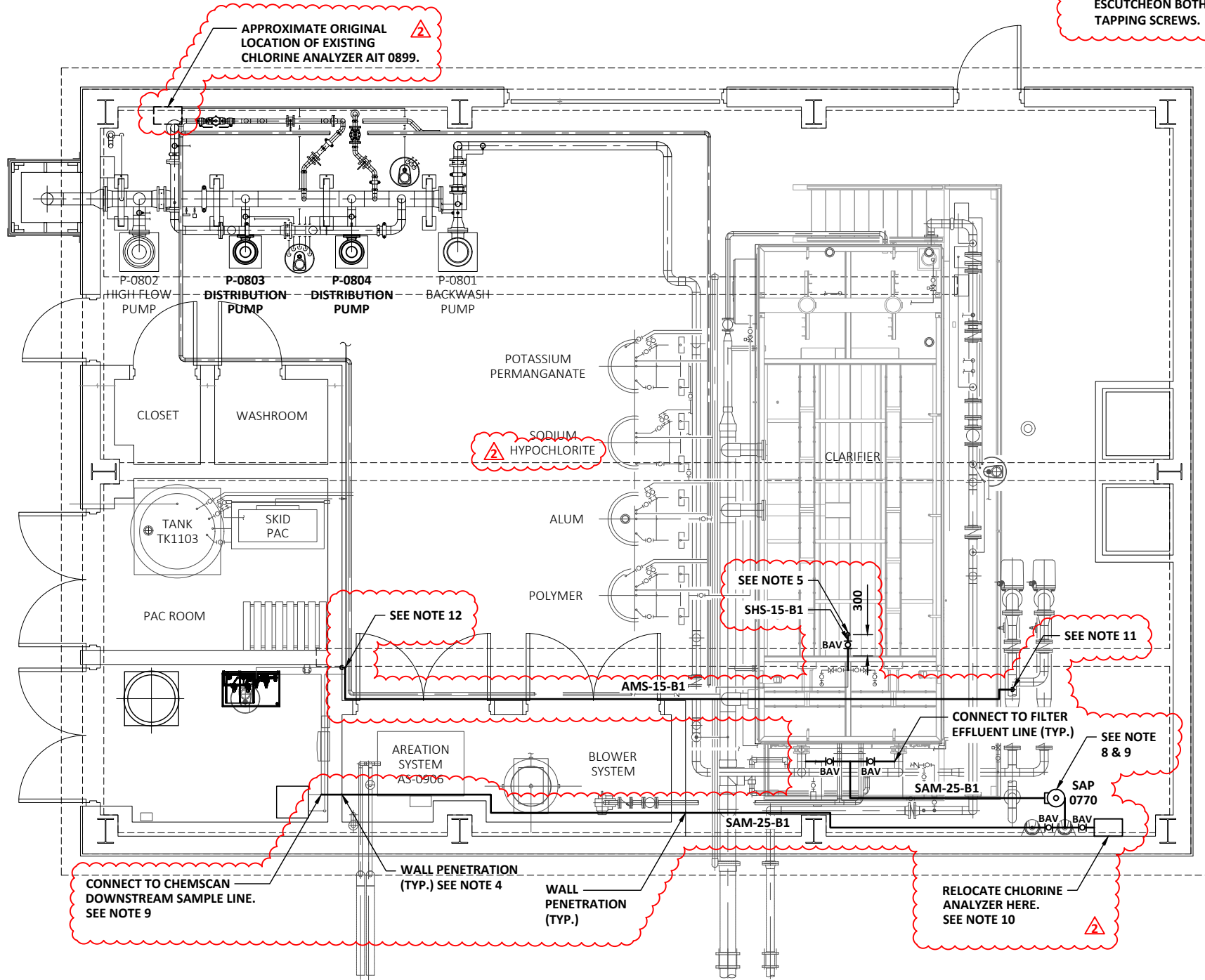
SADDLE HILLS COUNTY

**BONANZA DISTRIBUTION PUMPS UPGRADING
PROCESS
PROCESS AND INSTRUMENTATION DIAGRAM
BONANZA WTP**

**DESIGN
CRITERIA**

<p>UV-0864 ULTRA VIOLET SYSTEM</p> <p>MAN.: TROJAN SWIFT SC D03 TYPE: ULTRA VIOLET SYSTEM SIZE: 150 INLET, 150 OUTLET FLOW: 4.4 L/s (70 USGPM) UV/T: 75% Min AT 254 nm DRIVER: 208V / 60 Hz / 1Ø</p>	<p>UV-0865 ULTRA VIOLET SYSTEM</p> <p>MAN.: TROJAN SWIFT SC D03 TYPE: ULTRA VIOLET SYSTEM SIZE: 150 INLET, 150 OUTLET FLOW: 4.4 L/s (70 USGPM) UV/T: 75% Min AT 254 nm DRIVER: 208V / 60 Hz / 1Ø</p>	<p>P-0801 BACKWASH PUMP</p> <p>MAN.: GOULDS TYPE: VERTICAL TURBINE PUMP SIZE: 150 OUTLET FLOW: 15 L/s (317 USGPM) HEAD: 12.5 METRES (238 FT) DRIVER: 5 HP @ 1800 RPM 3Ø / 60 Hz / 600V NOTES: -</p>
---	---	--

DESIGNED	I.A.K., S.M.	JOB	5201-008-00
DRAWN	J.M.M.	SCALE	NTS
DATE	JANUARY 2025	DRAWING	P1.3 ADD01



NOTES CONTINUE'D:

10. RELOCATE CHLORINE ANALYZER ON NORTH EAST AREA OF THE WTP. PROVIDE ADEQUATE SUPPORT SUCH THAT ANALYZER IS 1200mm ABOVE FLOOR.
11. DISCONNECT AMMONIA SOLUTION INJECTION POINT AND CONNECT TO EXISTING INJECTION POINT DOWNSTREAM OF UV DISINFECTION UNITS.
12. RELOCATE AMMONIA SOLUTION LINE AS REQUIRED. UTILIZE EXISTING CHEMICAL LINES. FLUSH LINES PRIOR TO COMMISSIONING.
13. WALL PENETRATION TO SUIT PIPING. FILL VOID WITH FIRE STOPPING. PROVIDE ALUMINUM SHEET METAL ESCUTCHEON BOTH SIDES. SECURE WITH STAINLESS STEEL TAPPING SCREWS.

NOTES:

1. ALL BOLD ITEMS INDICATE WORK TO BE DONE AND ALL LIGHT ITEMS INDICATE EXISTING CONDITIONS.
2. ALL ELEVATIONS IN METRES, DIMENSIONS AND PIPE SIZES IN MILLIMETRES UNLESS NOTED OTHERWISE.
3. FOR INFORMATION REGARDING GENERAL NOTES, UTILITIES, SYMBOLS AND ABBREVIATIONS REFER TO THE CIVIL LEGEND AND CIVIL ABBREVIATIONS DRAWINGS.
4. PUMPS TO BE INSTALLED PER MANUFACTURER'S RECOMMENDATIONS.
5. RELOCATE SODIUM HYPOCHLORITE INJECTION LINE TO CENTER OF CLARIFIER. LINE SIZE AND MATERIAL TO MATCH EXISTING. UTILIZE EXISTING PIPING THAT HAS BEEN RUN TO THE FILTERS. RECONNECT THIS PIPING TO CHEMICAL FEED SYSTEM.
6. DISCONNECT AND DISPOSE OF EXISTING SODIUM HYPOCHLORITE INJECTION LINES TO FILTER AND POST UV. CONFIRM EXTENT OF REMOVALS WITH ENGINEER.
7. CONTRACTOR TO INSTALL SAP 0770 IN AREA APPROVED BY OWNER. LOCATION TO BE EASILY ACCESSIBLE FOR MAINTENANCE AND REMOVAL OF PUMP. INSTALL IN ACCORDANCE WITH MANUFACTURER'S RECOMMENDATION. INCLUDE ALL SUPPORTS REQUIRED.
8. CONTRACTOR TO RUN FEED SAMPLE LINE NEATLY TO NOT OBSTRUCT PASSAGE WAYS OR WORK AREAS. SUPPORT AS REQUIRED. CONNECT TO FILTER 1 AND FILTER 2 TREATED WATER LINES AT LOCATIONS APPROVED BY ENGINEER. CONNECTION POINT TO BE AT SIDE OF PIPE.
9. CONTRACTOR TO RUN SUPPLY SAMPLE LINES NEATLY TO NOT OBSTRUCT PASSAGE WAYS OR WORK AREAS. SUPPORT AS REQUIRED. CONNECT TO CHEMSCAN DOWNSTREAM LINE. CONNECT TO FREE CHLORINE ANALYZER FEED LINE. REMOVE AND DISPOSE OF EXISTING SAMPLE LINES. RUN SAMPLE LINES TO AVOID HIGH POINTS.

THE EXISTENCE, LOCATION AND ELEVATION OF ALL UTILITIES AS SHOWN ON ANY PLANS MAY BE BASED ON INFORMATION RECEIVED FROM THE RESPECTIVE AUTHORITIES AND ARE NOT GUARANTEED BY THE ENGINEER. NO RESPONSIBILITY IS IMPLIED OR ASSUMED BY THE ENGINEER AS TO THE LOCATION AND ELEVATION OR ANY OMISSIONS. THE CONTRACTOR OR ANY THIRD-PARTY IS RESPONSIBLE FOR DETERMINING THE EXISTENCE, LOCATION AND ELEVATION OF ALL SUCH UTILITIES AND MUST CONTACT THE VARIOUS UTILITY COMPANIES FOR ON SITE INFORMATION PRIOR TO COMMENCEMENT OF ANY OPERATIONS.

25-02-14	FOR ADDENDUM 1
25-01-28	FOR TENDER
ISSUE YY-MM-DD	REVISION

PERMIT TO PRACTICE MPE, a division of Englobe Corp. Signature _____ APEGA ID 77905 Date FEB 14, 2025 PERMIT NUMBER: P 7841 The Association of Professional Engineers and Geoscientists of Alberta (APEGA)	
---	--



SADDLE HILLS COUNTY

**BONANZA DISTRIBUTION PUMPS UPGRADING PROCESS
OVERALL MAIN FLOOR PLAN
BONANZA WTP**

DESIGNED I.A.K., S.M.	JOB 5201-008-00
DRAWN J.M.M.	SCALE 1:75
DATE JANUARY 2025	DRAWING P2.1 ADD01

DIGITAL DRAWINGS BEST VIEWED IN ADOBE ACROBAT READER

THIS DRAWING MAY HAVE BEEN MODIFIED FROM ITS ORIGINAL SIZE. ALL SCALE NOTATIONS INDICATED ARE BASED ON 11"x17" FORMAT DRAWINGS

SAP
0780
aaaa bb
HSA DI
MSR DI
MSF DI
MCR DO

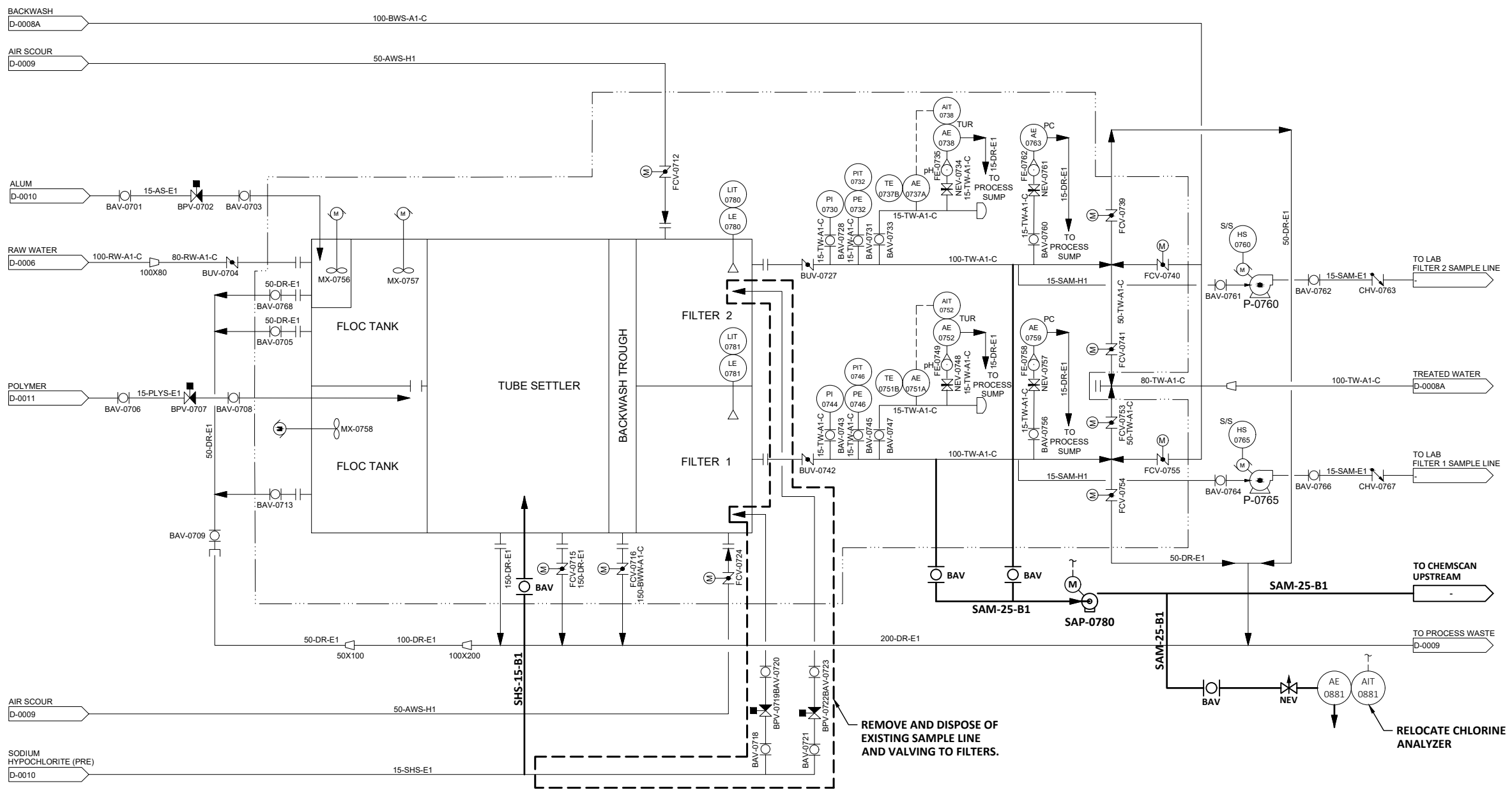
AIT
0881
aaaa bb
AI AI
YA DI

PLC/HMI
(PNL)



MCC
(VAC)

- NOTES:**
- ALL BOLD ITEMS INDICATE WORK TO BE DONE AND ALL LIGHT ITEMS INDICATE EXISTING CONDITIONS.**
 - ALL ELEVATIONS IN METRES, DIMENSIONS AND PIPE SIZES IN MILLIMETRES UNLESS NOTED OTHERWISE.**
 - PUMPS TO BE INSTALLED PER MANUFACTURER'S RECOMMENDATIONS.**
 - FOR INFORMATION REGARDING GENERAL NOTES, UTILITIES, SYMBOLS AND ABBREVIATIONS REFER TO THE CIVIL LEGEND AND CIVIL ABBREVIATIONS DRAWINGS.**



THE EXISTENCE, LOCATION AND ELEVATION OF ALL UTILITIES AS SHOWN ON ANY PLANS MAY BE BASED ON INFORMATION RECEIVED FROM THE RESPECTIVE AUTHORITIES AND ARE NOT GUARANTEED BY THE ENGINEER. NO RESPONSIBILITY IS IMPLIED OR ASSUMED BY THE ENGINEER AS TO THE LOCATION AND ELEVATION OR ANY OMISSIONS. THE CONTRACTOR OR ANY THIRD-PARTY IS RESPONSIBLE FOR DETERMINING THE EXISTENCE, LOCATION AND ELEVATION OF ALL SUCH UTILITIES AND MUST CONTACT THE VARIOUS UTILITY COMPANIES FOR ON SITE INFORMATION PRIOR TO COMMENCEMENT OF ANY OPERATIONS.

ISSUE	YY-MM-DD	REVISION
25-02-14	FOR ADDENDUM 1	

PERMIT TO PRACTICE
MPE, a division of Englobe Corp.
Signature: _____
APEGA ID: **77905**
Date: **FEB 14, 2025**
PERMIT NUMBER: P 7841
The Association of Professional Engineers and Geoscientists of Alberta (APEGA)



SADDLE HILLS COUNTY

**BONANZA DISTRIBUTION PUMPS UPGRADING PROCESS
PROCESS AND INSTRUMENTATION DIAGRAM
KSITUAN WTP**

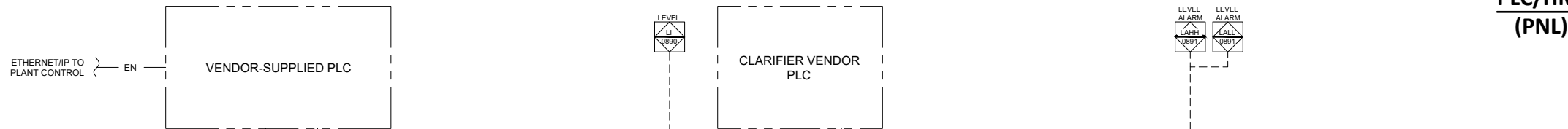
SAP-0780
SAMPLE PUMP
TYPE: CIRCULATOR PUMP
SIZE: 20mm OUTLET
FLOW: 0-7.5 m3/h
HEAD: 0-8.8 m
POWER: ½ HP/ 60Hz / 1 PHASE / 115 VAC

DESIGN
CRITERIA

DESIGNED	I.A.K., S.M.	JOB	5201-008-00
DRAWN	J.M.M.	SCALE	NTS
DATE	JANUARY 2025	DRAWING	P1.10 ADD01

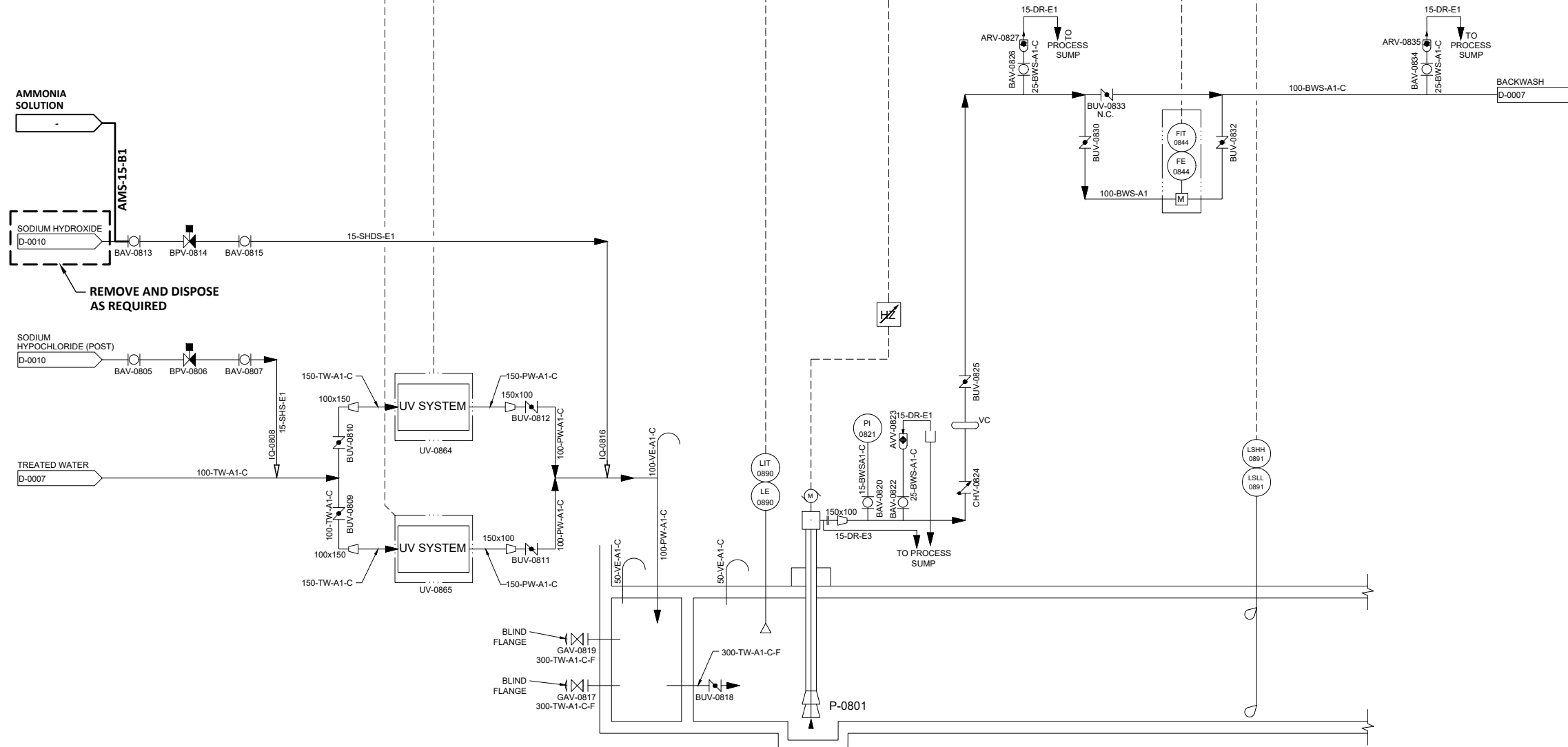
DIGITAL DRAWINGS BEST VIEWED IN ADOBE ACROBAT READER

THIS DRAWING MAY HAVE BEEN MODIFIED FROM ITS ORIGINAL SIZE. ALL SCALE NOTATIONS INDICATED ARE BASED ON 11"x17" FORMAT DRAWINGS



PLC/HMI
(PNL)

MCC
(VAC)



- NOTES:
1. ALL BOLD ITEMS INDICATE WORK TO BE DONE AND ALL LIGHT ITEMS INDICATE EXISTING CONDITIONS.
 2. ALL ELEVATIONS IN METRES, DIMENSIONS AND PIPE SIZES IN MILLIMETRES UNLESS NOTED OTHERWISE.
 3. PUMPS TO BE INSTALLED PER MANUFACTURER'S RECOMMENDATIONS.
 4. FOR INFORMATION REGARDING GENERAL NOTES, UTILITIES, SYMBOLS AND ABBREVIATIONS REFER TO THE CIVIL LEGEND AND CIVIL ABBREVIATIONS DRAWINGS.

THE EXISTENCE, LOCATION AND ELEVATION OF ALL UTILITIES AS SHOWN ON ANY PLANS MAY BE BASED ON INFORMATION RECEIVED FROM THE RESPECTIVE AUTHORITIES AND ARE NOT GUARANTEED BY THE ENGINEER. NO RESPONSIBILITY IS IMPLIED OR ASSUMED BY THE ENGINEER AS TO THE LOCATION AND ELEVATION OR ANY OMISSIONS. THE CONTRACTOR OR ANY THIRD-PARTY IS RESPONSIBLE FOR DETERMINING THE EXISTENCE, LOCATION AND ELEVATION OF ALL SUCH UTILITIES AND MUST CONTACT THE VARIOUS UTILITY COMPANIES FOR ON SITE INFORMATION PRIOR TO COMMENCEMENT OF ANY OPERATIONS.

25-02-14 FOR ADDENDUM 1
ISSUE YY-MM-DD REVISION

PERMIT TO PRACTICE
MPE, a division of Englobe Corp.
Signature _____
APEGA ID 77905
Date FEB 14, 2025
PERMIT NUMBER: P 7841
The Association of Professional Engineers and Geoscientists of Alberta (APEGA)



SADDLE HILLS COUNTY

BONANZA DISTRIBUTION PUMPS UPGRADING
PROCESS
PROCESS AND INSTRUMENTATION DIAGRAM
KSITUAN WTP

DESIGN
CRITERIA

UV-0864 ULTRA VIOLET SYSTEM
MAN.: TROJAN SWIFT SC D03
TYPE: ULTRA VIOLET SYSTEM
SIZE: 150 INLET, 150 OUTLET
FLOW: 4.4 L/s (70 USGPM)
UV DOSE: -
UVT: 75% Min AT 254 nm
DRIVER: 208V / 60 Hz / 1Ø

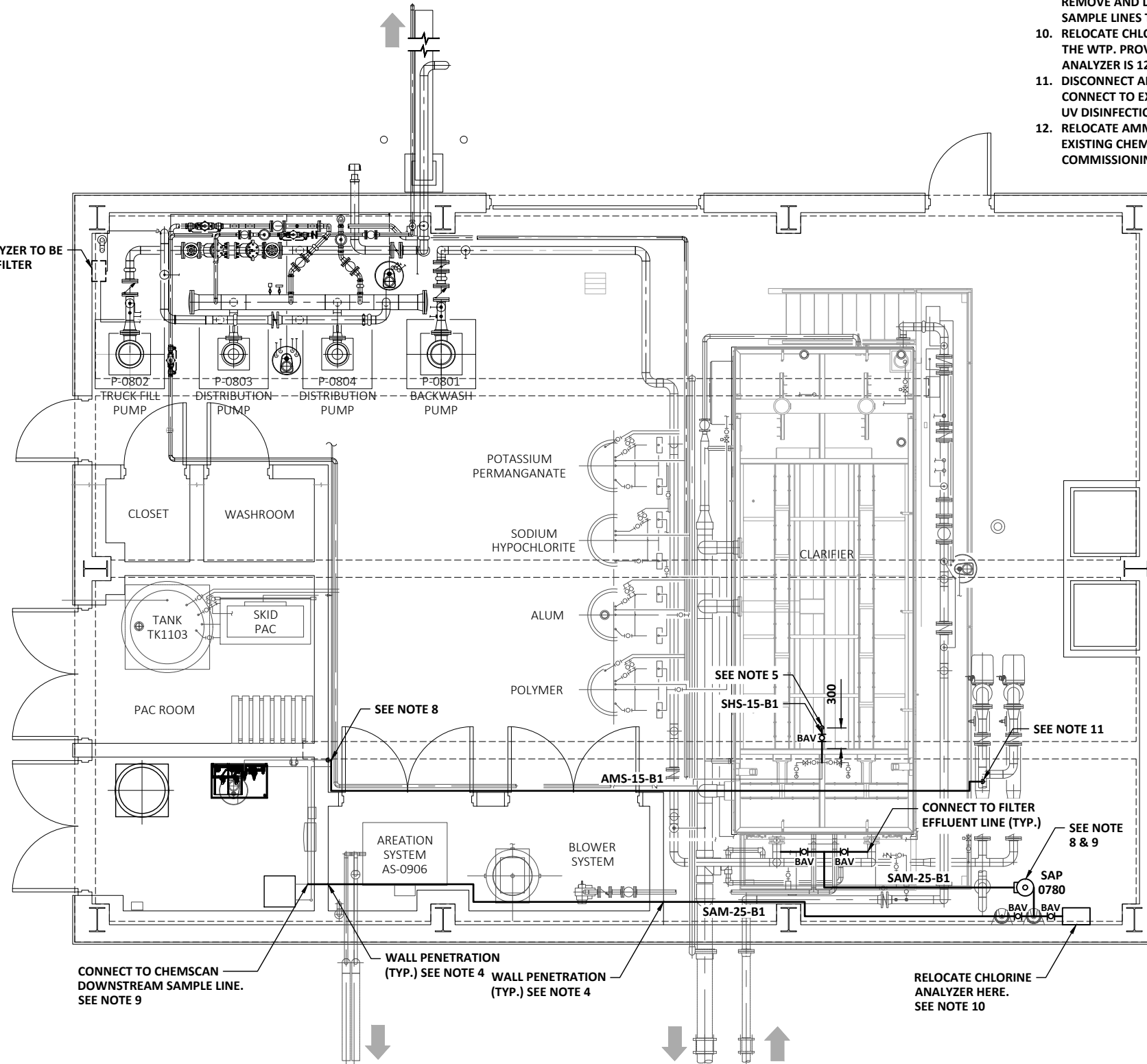
UV-0865 ULTRA VIOLET SYSTEM
MAN.: TROJAN SWIFT SC D03
TYPE: ULTRA VIOLET SYSTEM
SIZE: 150 INLET, 150 OUTLET
FLOW: 4.4 L/s (70 USGPM)
UV DOSE: -
UVT: 75% Min AT 254 nm
DRIVER: 208V / 60 Hz / 1Ø

P-0801 BACKWASH PUMP
MAN.: GOULDS
TYPE: VERTICAL TURBINE PUMP
SIZE: 150 OUTLET
FLOW: 15 L/s (317 USGPM)
HEAD: 12.5 METRES (238 FT)
DRIVER: 5 HP @ 1800 RPM 3Ø / 60 Hz / 600V
NOTES: -

DESIGNED	I.A.K., S.M.	JOB	5201-008-00
DRAWN	J.M.M.	SCALE	NTS
DATE	JANUARY 2025	DRAWING	P1.11 ADD01



CHLORINE ANALYZER TO BE RELOCATED TO FILTER EFFLUENT AREA.



NOTES CONTINUE'D:

9. CONTRACTOR TO RUN SUPPLY SAMPLE LINES NEATLY TO NOT OBSTRUCT PASSAGE WAYS OR WORK AREAS. SUPPORT AS REQUIRED. CONNECT TO CHEMSCAN DOWNSTREAM LINE. CONNECT TO FREE CHLORINE ANALYZER FEED LINE. REMOVE AND DISPOSE OF EXISTING SAMPLE LINES. RUN SAMPLE LINES TO AVOID HIGH POINTS.
10. RELOCATE CHLORINE ANALYZER ON NORTH EAST AREA OF THE WTP. PROVIDE ADEQUATE SUPPORT SUCH THAT ANALYZER IS 1200mm ABOVE FLOOR.
11. DISCONNECT AMMONIA SOLUTION INJECTION POINT AND CONNECT TO EXISTING INJECTION POINT DOWNSTREAM OF UV DISINFECTION UNITS.
12. RELOCATE AMMONIA SOLUTION LINE AS REQUIRED. UTILIZE EXISTING CHEMICAL LINES. FLUSH LINES PRIOR TO COMMISSIONING.

NOTES:

1. ALL BOLD ITEMS INDICATE WORK TO BE DONE AND ALL LIGHT ITEMS INDICATE EXISTING CONDITIONS.
2. ALL ELEVATIONS IN METRES, DIMENSIONS AND PIPE SIZES IN MILLIMETRES UNLESS NOTED OTHERWISE.
3. FOR INFORMATION REGARDING GENERAL NOTES, UTILITIES, SYMBOLS AND ABBREVIATIONS REFER TO THE CIVIL LEGEND AND CIVIL ABBREVIATIONS DRAWINGS.
4. WALL PENETRATION TO SUIT PIPING. FILL VOID WITH FIRE STOPPING. PROVIDE ALUMINUM SHEET METAL ESCUTCHEON BOTH SIDES. SECURE WITH STAINLESS STEEL TAPPING SCREWS.
5. RELOCATE SODIUM HYPOCHLORITE INJECTION LINE TO CENTER OF CLARIFIER. LINE SIZE AND MATERIAL TO MATCH EXISTING. UTILIZE EXISTING PIPING THAT HAS BEEN RUN TO THE FILTERS. RECONNECT THIS PIPING TO CHEMICAL FEED SYSTEM.
6. DISCONNECT AND DISPOSE OF EXISTING SODIUM HYPOCHLORITE INJECTION LINES TO FILTER AND POST UV. CONFIRM EXTENT OF REMOVALS WITH ENGINEER.
7. CONTRACTOR TO INSTALL SAP 0770 IN AREA APPROVED BY OWNER. LOCATION TO BE EASILY ACCESSIBLE FOR MAINTENANCE AND REMOVAL OF PUMP. INSTALL IN ACCORDANCE WITH MANUFACTURER'S RECOMMENDATION. INCLUDE ALL SUPPORTS REQUIRED.
8. CONTRACTOR TO RUN FEED SAMPLE LINE NEATLY TO NOT OBSTRUCT PASSAGE WAYS OR WORK AREAS. SUPPORT AS REQUIRED. CONNECT TO FILTER 1 AND FILTER 2 TREATED WATER LINES AT LOCATIONS APPROVED BY ENGINEER. CONNECTION POINT TO BE AT SIDE OF PIPE.



THE EXISTENCE, LOCATION AND ELEVATION OF ALL UTILITIES AS SHOWN ON ANY PLANS MAY BE BASED ON INFORMATION RECEIVED FROM THE RESPECTIVE AUTHORITIES AND ARE NOT GUARANTEED BY THE ENGINEER. NO RESPONSIBILITY IS IMPLIED OR ASSUMED BY THE ENGINEER AS TO THE LOCATION AND ELEVATION OR ANY OMISSIONS. THE CONTRACTOR OR ANY THIRD-PARTY IS RESPONSIBLE FOR DETERMINING THE EXISTENCE, LOCATION AND ELEVATION OF ALL SUCH UTILITIES AND MUST CONTACT THE VARIOUS UTILITY COMPANIES FOR ON SITE INFORMATION PRIOR TO COMMENCEMENT OF ANY OPERATIONS.

25-02-14	FOR ADDENDUM 1
ISSUE YY-MM-DD	REVISION

PERMIT TO PRACTICE
MPE, a division of Englobe Corp.
Signature _____
APEGA ID 77905
Date FEB 14, 2025
PERMIT NUMBER: P 7841
The Association of Professional Engineers and Geoscientists of Alberta (APEGA)



FEB 14, 2025



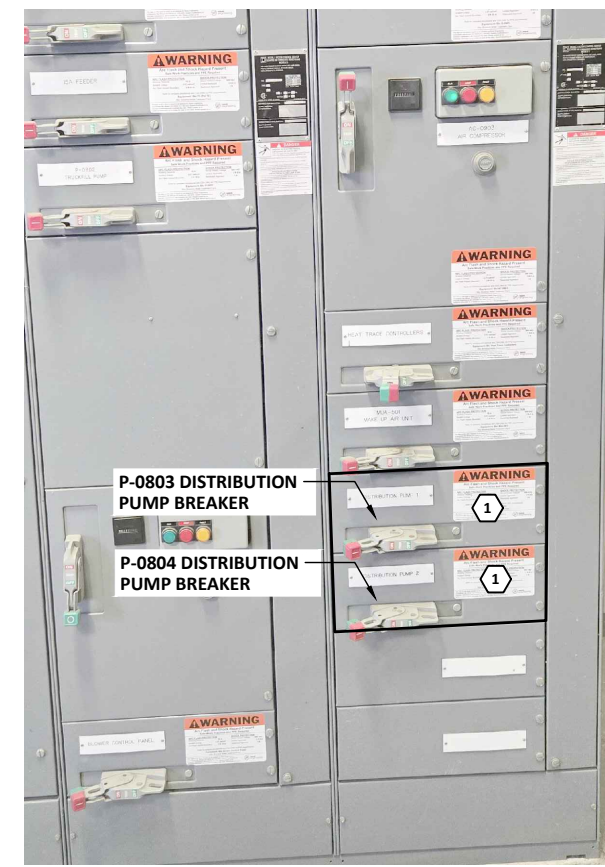
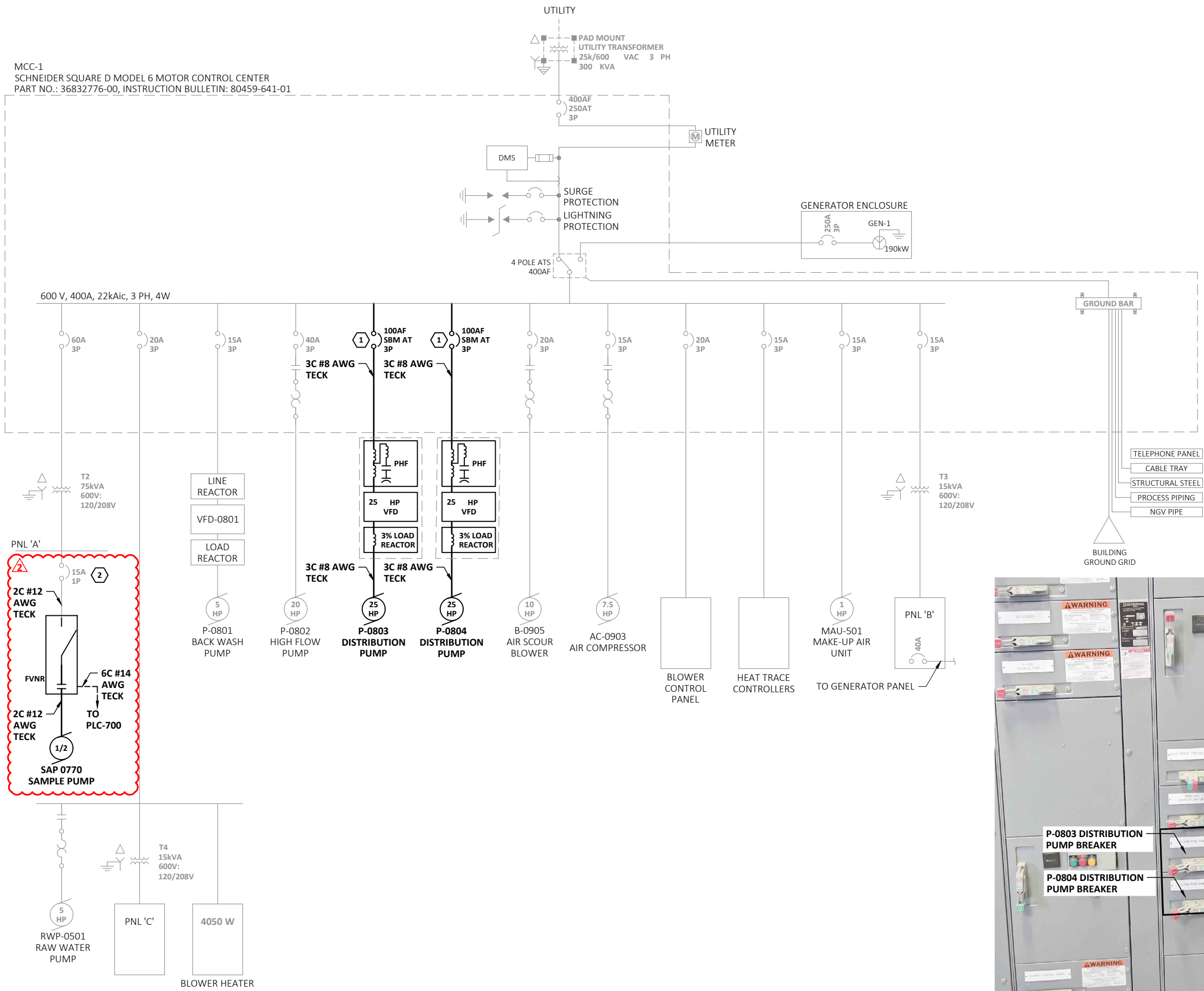
a division of Englobe

SADDLE HILLS COUNTY

BONANZA DISTRIBUTION PUMPS UPGRADING PROCESS
OVERALL MAIN FLOOR PLAN
KSITUAN WTP

DESIGNED I.A.K., S.M.	JOB 5201-008-00
DRAWN J.M.M.	SCALE 1:75
DATE JANUARY 2025	DRAWING P2.10 ADD01

MCC-1
 SCHNEIDER SQUARE D MODEL 6 MOTOR CONTROL CENTER
 PART NO.: 36832776-00, INSTRUCTION BULLETIN: 80459-641-01



- NOTES:
- FOR DEMOLITION PLANS REFER TO E2.1 AND E2.2.
 - MECHANICAL EQUIPMENT PROVIDED AND INSTALLED BY DIVISION 15 CONTRACTOR. DIVISION 16 CONTRACTOR TO PROVIDE AND INSTALL WIRING.
 - CONTRACTOR TO CONFIRM OVER CURRENT DEVICE AND WIRE SIZE PRIOR TO ORDERING.
 - SBM - SIZED BY MANUFACTURER.
 - BONDING CONDUCTORS ARE GENERALLY NOT SHOWN. BOND EQUIPMENT AS PER CEC WHERE BONDING CONDUCTORS ARE NOT EXPRESSLY SHOWN.
 - ALL CABLES ARE TO BE COPPER UNLESS OTHERWISE NOTED.

- KEY NOTES:
- REPLACE THE EXISTING BREAKER BUCKET ALONG WITH DOOR AND LABEL AS REQUIRED. NEW BREAKERS SHALL BE LOCKABLE. FOR DETAILS ON EXISTING MCC PLEASE REFER TO SCHNEIDER SQUARE D MODEL 6 MOTOR CONTROL CENTER PART NO.: 36832776-00, INSTRUCTION BULLETIN: 80459-641-01
 - UTILIZE EXISTING SPARE BREAKER IN PANEL A.

25-02-14	FOR ADDENDUM 1	
25-01-28	FOR TENDER	
ISSUE	YY-MM-DD	REVISION

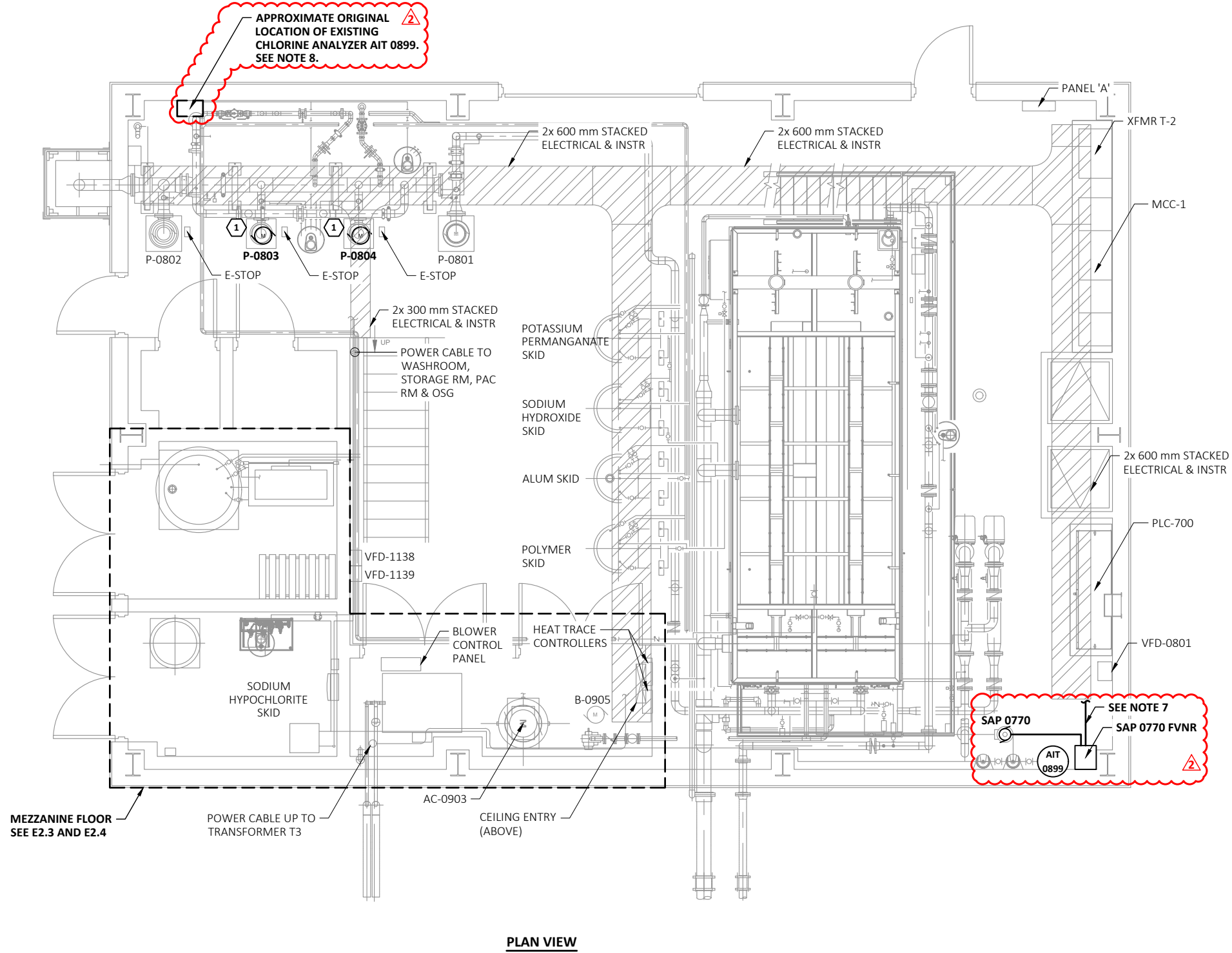
PERMIT TO PRACTICE MPE, a division of Englobe Corp. Signature _____ APEGA ID 77905 Date FEB 14, 2025 PERMIT NUMBER: P 7841 The Association of Professional Engineers and Geoscientists of Alberta (APEGA)	
---	--



SADDLE HILLS COUNTY

**BONANZA DISTRIBUTION PUMPS
 UPGRADING
 ELECTRICAL
 SINGLE LINE PROPOSED
 BONANZA WTP**

DESIGNED	A.M., P.P.G.	JOB	5201-008-00
DRAWN	A.M.	SCALE	NTS
DATE	JANUARY 2025	DRAWING	E1.2 ADD01



PLAN VIEW

- NOTES:
- FOR DEMOLITION SINGLE LINE DIAGRAM REFER TO E1.1.
 - CONTRACTOR TO ENSURE THAT DEMOLISHED CABLES ARE REMOVED FROM THE CABLE TRAY.
 - THIS DRAWINGS REPRESENTS THE MAJORITY OF EQUIPMENT TO BE DEMOLISHED. HOWEVER, THERE MAY BE DEVICES NOT SHOWN ON THIS DRAWING THAT ARE REQUIRED TO BE DEMOLISHED. DEMOLISH ALL POWER, CONDUIT, CABLE AND EQUIPMENT NOT BEING UTILIZED. CONTRACTOR SHALL REMOVE ALL UNUSED POWER WIRING BACK TO ITS SOURCE, FROM ANY DEMOLISHED MECHANICAL EQUIPMENT.
 - COORDINATE WITH OWNER TO DETERMINE WHAT EQUIPMENT IS TO BE SALVAGED AND RETURNED TO OWNER.
 - FOR PROPOSED SINGLE LINE DIAGRAM REFER TO E1.2.
 - CONTRACTOR TO UTILIZE EXISTING CABLE TRAY FOR NEW EQUIPMENT WIRING.
 - SAP 0770 POWER FROM PANEL A AND CONTROL FROM PLC-700. TERMINATE CONTROL WIRING FOR SAP 0770 TO EXISTING SPARE I/O. SEE DRAWING E3.2 FOR WIRING DETAILS.
 - RELOCATE CHLORINE ANALYZER TO NORTH EAST AREA OF THE WTP. PULL BACK POWER AND CONTROL WIRING TO NEW LOCATION.

- KEY NOTES:
- REMOVE AND REPLACE THE EXISTING MOTORS ALONG WITH THE ASSOCIATED POWER WIRING.

25-02-14	FOR ADDENDUM 1
25-01-28	FOR TENDER
YY-MM-DD	REVISION

PERMIT TO PRACTICE MPE, a division of Englobe Corp. Signature _____ APEGA ID 77905 Date FEB 14, 2025 PERMIT NUMBER: P 7841 The Association of Professional Engineers and Geoscientists of Alberta (APEGA)	 FEB 14, 2025
---	------------------



SADDLE HILLS COUNTY

BONANZA DISTRIBUTION PUMPS
UPGRADING
ELECTRICAL
MAIN FLOOR PLAN
BONANZA WTP

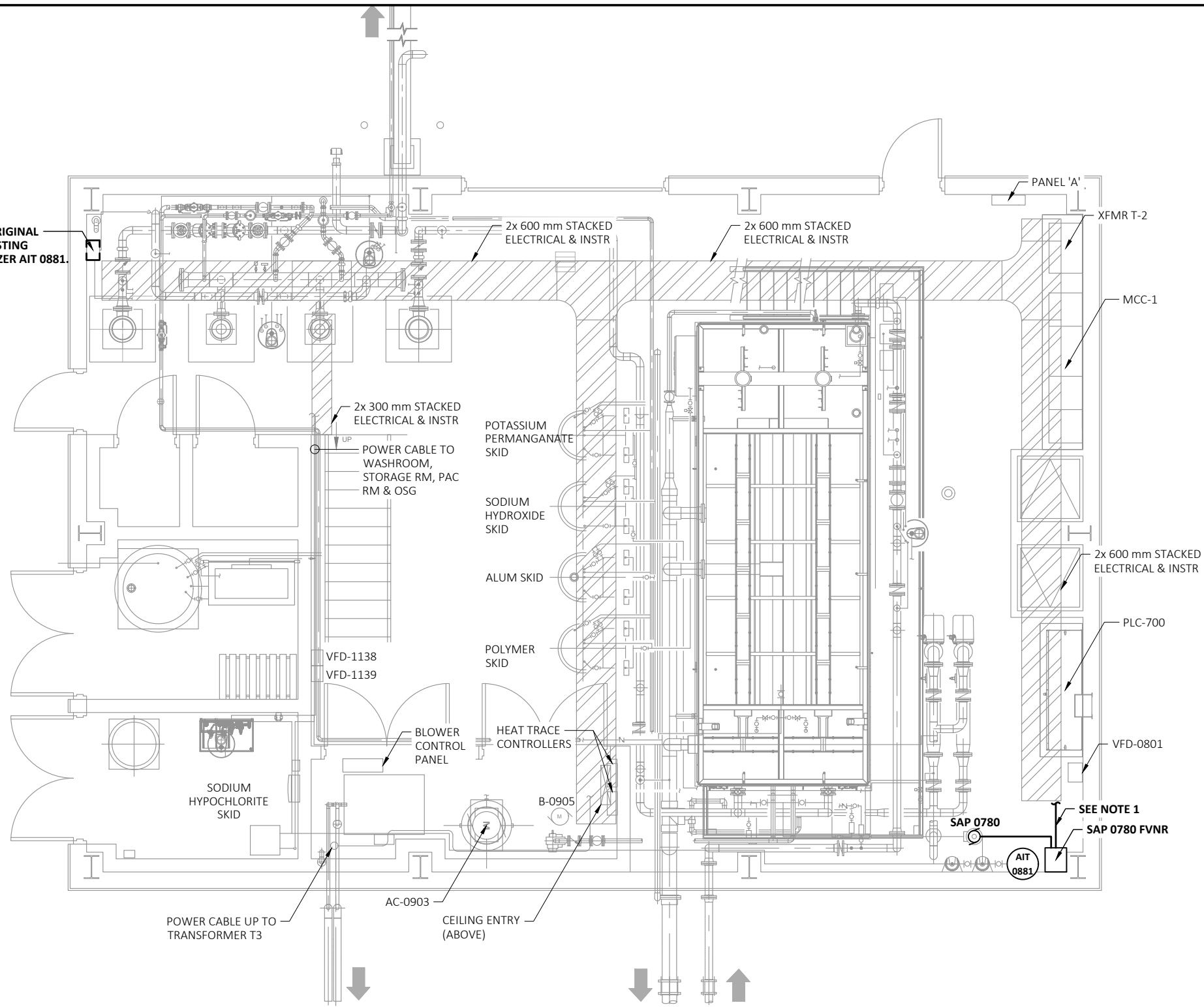
DESIGNED	A.M., P.P.G.	JOB	5201-008-00
DRAWN	A.M.	SCALE	1:75
DATE	JANUARY 2025	DRAWING	E2.1 ADD01

DIGITAL DRAWINGS BEST VIEWED IN ADOBE ACROBAT READER

THIS DRAWING MAY HAVE BEEN MODIFIED FROM ITS ORIGINAL SIZE. ALL SCALE NOTATIONS INDICATED ARE BASED ON 11"x17" FORMAT DRAWINGS



APPROXIMATE ORIGINAL LOCATION OF EXISTING CHLORINE ANALYZER AIT 0881. SEE NOTE 2.



PLAN VIEW

NOTES:

- SAP 0780 POWER FROM PANEL A AND CONTROL FROM PLC-700. TERMINATE CONTROL WIRING FOR SAP 0780 TO EXISTING SPARE I/O. SEE DRAWING E3.2 FOR WIRING DETAILS.
- RELOCATE CHLORINE ANALYZER TO NORTH EAST AREA OF THE WTP. PULL BACK POWER AND CONTROL WIRING TO NEW LOCATION.



25-02-14	FOR ADDENDUM 1
YY-MM-DD	REVISION

PERMIT TO PRACTICE
MPE, a division of Englobe Corp.
Signature _____
APEGA ID 77905
Date FEB 14, 2025
PERMIT NUMBER: P 7841
The Association of Professional Engineers and Geoscientists of Alberta (APEGA)



FEB 14, 2025

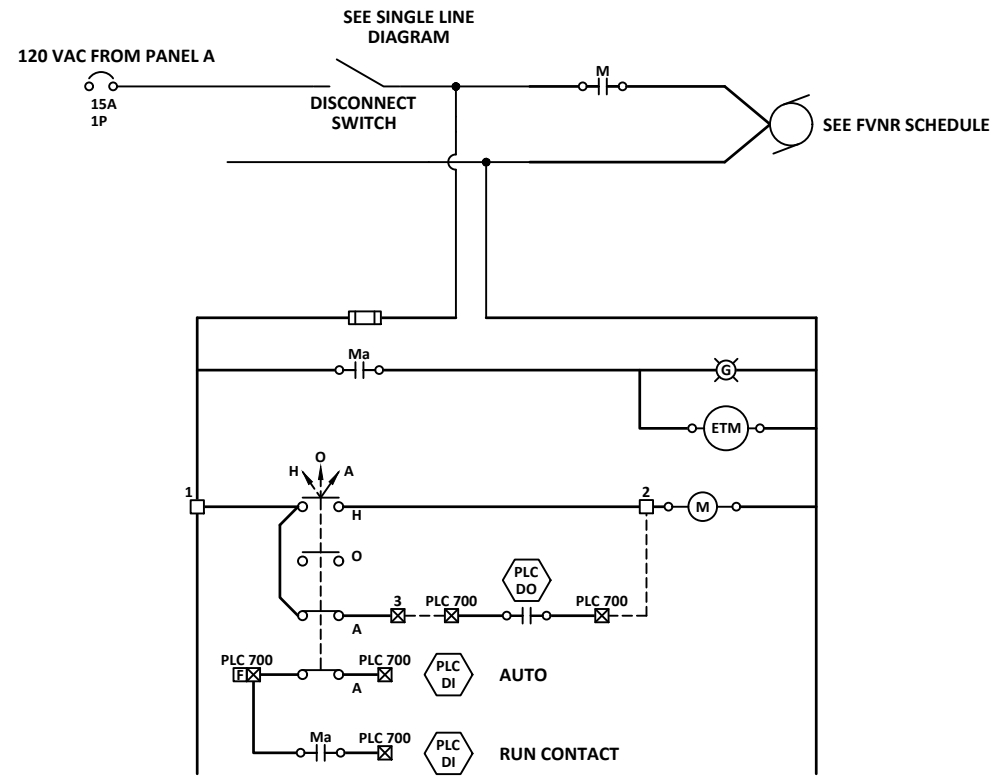


a division of Englobe

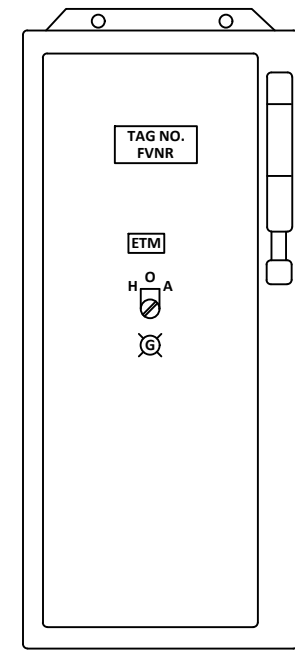
SADDLE HILLS COUNTY

BONANZA DISTRIBUTION PUMPS
UPGRADING
ELECTRICAL
MAIN FLOOR PLAN
KSITUAN WTP

DESIGNED A.M., P.P.G.	JOB 5201-008-00
DRAWN A.M.	SCALE 1:75
DATE JANUARY 2025	DRAWING E2.4 ADD01



TYPICAL FULL VOLTAGE NON REVERSING STARTER



TYPICAL FVNR STARTER
NTS

FVNR STARTER SCHEDULE		
SITE	PUMP TAG	HP
BONANZA WTP	SAP-0770	1/2
KSITUAN WTP	SAP-0780	1/2

25-02-14	FOR ADDENDUM 1
ISSUE	YY-MM-DD REVISION

PERMIT TO PRACTICE
MPE, a division of Englobe Corp.
Signature _____
APEGA ID 77905
Date FEB 14, 2025
PERMIT NUMBER: P 7841
The Association of Professional Engineers and Geoscientists of Alberta (APEGA)



SADDLE HILLS COUNTY

**BONANZA DISTRIBUTION PUMPS
UPGRADING
ELECTRICAL
FVNR DETAILS**

DESIGNED	A.M., P.P.G.	JOB	5201-008-00
DRAWN	A.M.	SCALE	NTS
DATE	JANUARY 2025	DRAWING	E3.2 ADD01