

Volume 6, Issue 2  
Summer/Fall, 2023



Saddle Hills County

LIVING

# INSIDE

Voyent Alert! Notification System	4
Emergency Preparedness Resources	6
Our Community	8
History - South Peace Regional Archives	10
'Discover the Peace' - 2023 Photo Contest	11
Rural Potable Water Sign-up	12
Recycling 101	13
Drought and Trees	14
Business Feature: Bay Tree Boutique	15
County News	16
Business Feature: Walter's Cat Works	18
Meet Our Staff	19
Guided Saddle Hills: Savanna Splash Park	20
Guided Saddle Hills: Farmers Market	21
Municipal Mythbusters	22

*Cover photo by Anna Richard  
Interior photo by Marcia Day*

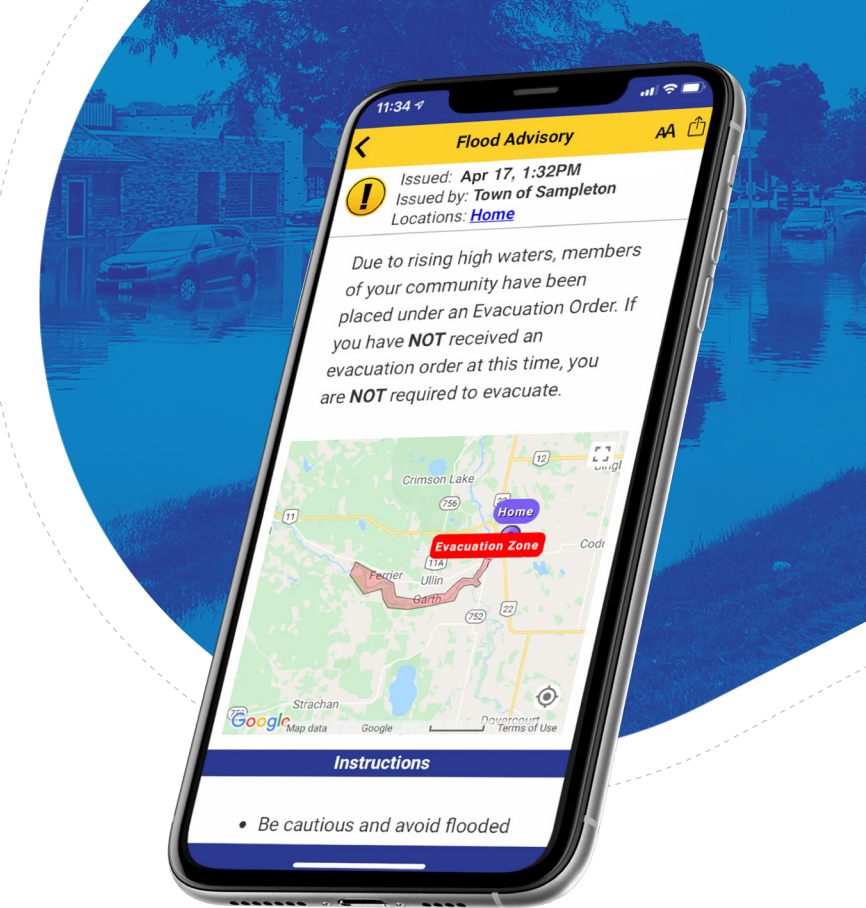


# REGISTER FOR FREE TODAY

## WHAT IS VOYENT ALERT!?

Voyent Alert! Is a multi-purpose communication service provided by Saddle Hills County to keep you informed of critical events like fires or floods as well as day-to-day communications such as road maintenance and closures, water advisories, truck fill closures, service disruptions, and any other important information.

### NOTIFICATION SERVICE



The service is completely anonymous and you can opt out at any time. It is completely free and will allow you to monitor events in any region that is subscribed to the Voyent Alert! service.

## WHAT CAN YOU EXPECT

### PERSONALIZED COMMUNICATIONS

Voyent Alert! provides informative communications. Critical information such as the distance and direction from an incident, and preferred evacuation routes from your followed locations may be provided.

### FOLLOW MULTIPLE LOCATIONS

Voyent Alert! allows you to create and follow multiple locations such as "Kids School" or "Mom's House". Any event or communication related to your followed locations will be forwarded to you along your preferred communication channel.

### COMMUNICATIONS YOUR WAY

Receive alerts over a wide variety of communication channels including mobile apps, text/SMS alerting, email or voice dial. You can register for one or more communication channels.

### NO MESSAGE FATIGUE

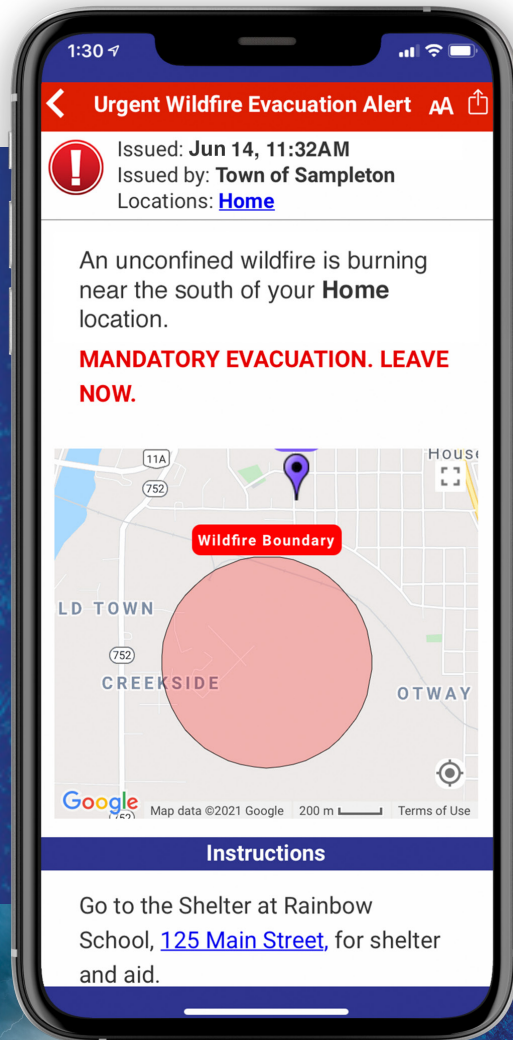
Smart alerting capabilities ensure that you will only get notified when a communication is relevant to your or one of the locations you are following.

### EASY REGISTRATION

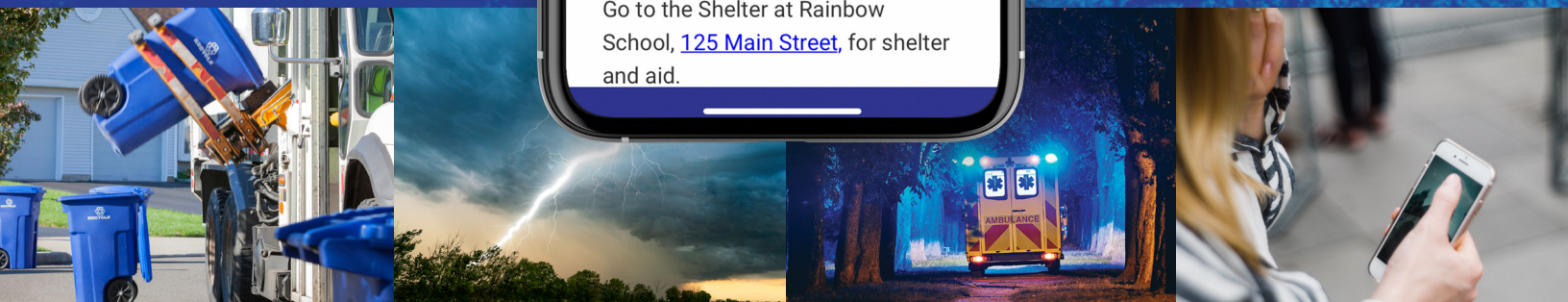
Registration for the service is FREE, simple and anonymous.



### CRITICAL INCIDENT NOTIFICATIONS



### EVERYDAY COMMUNICATIONS



REGISTER NOW!



### MOBILE APP USERS

Download and install the Voyent Alert! app from the Apple App or Google Play stores.



Register online to receive email, voice or text-based alerts at: [register.voyent-alert.com](https://register.voyent-alert.com)

# EMERGENCY PREPAREDNESS

You never know when an emergency could strike. Are you prepared? Emergency Preparedness is important and residents should consider what plans they have in place to protect themselves, their families, property, and animals should crisis occur.



## WHAT GOES IN AN EMERGENCY PREPAREDNESS KIT?

### BASIC EMERGENCY KIT

- WATER** - at least two litres of water per person, per day in small bottles that can be easily carried
- FOOD** - that won't spoil, such as canned food (and opener), energy bars, and dried foods
- MEDICATION** - prescription medications and essential medical equipment, or infant formula
- FIRST AID KIT** - include bandages, gauze, tape, medicine, protective gloves, and antiseptic
- CASH** - include smaller bills and change, for incidental expenses
- CRITICAL RECORDS** - copies of personal documents such as ID, Passport, SIN#, and Birth Certificate
- RADIO & FLASHLIGHT** - battery or crank powered, with extra batteries (if necessary)

### RECOMMENDED ADDITIONAL ITEMS

- SANITATION SUPPLIES** - portable cleaning wipes, masks, hand sanitizer, and trash bags
- ENTERTAINMENT** - books, portable toys, games and chargers
- BLANKETS** - a sleeping bag or warm blanket for each household member
- CANDLES** - include matches or a lighter and place in a sturdy container
- CLOTHING** - a change of clothing and footwear for each household member
- PET FOOD** - and any other essential pet items, such as medical records
- OTHER TOOLS** - such as a pocket knife, hammer, whistle, duct tape, small stove etc.

BEST PRACTICE IS TO BE PREPARED TO BE SELF-SUFFICIENT FOR AT LEAST 72 HOURS. MAKE SURE YOUR KIT IS EASY TO CARRY AND EVERYONE IN THE HOUSEHOLD KNOWS WHERE IT IS. KEEP IT ORGANIZED AND EASY TO FIND, IN AN ACCESSIBLE LOCATION.

Additional Emergency Preparedness Resources can be found through Be Prepared Alberta [alberta.ca/emergency-preparedness.aspx](http://alberta.ca/emergency-preparedness.aspx)



If you own a farm or grazing operation the safety of your livestock is also incredibly important. Lots of producers already have plans in place for livestock evacuation, and with the many agricultural societies and fellow farmers in our community help is often close at hand. Sometimes in the event of an evacuation it isn't always feasible to evacuate your livestock from your farm or grazing lease and, in some situations, it is even safer to shelter them on your property. Do you know what to do if you need to shelter your animals in place?

- **SURVEY** - make sure you know the best places to shelter your animals in the event of a disaster
- **OPEN SPACE** - make sure there is at least a few acres of open space with no trees or power lines
- **FOOD & WATER** - ensure animals have available food and water to last several days, if needed
- **FENCING** - open any cross fencing to provide animals space to move
- **HAZARDS** - remove any fire hazards and label and store hazardous chemicals in a secure area

Creating an emergency plan of your own with important contacts such as neighbours, employees, veterinarians, poison control, transportation resources, and animal care can go a long way in the event of an unplanned emergency. Keeping the list on you, such as in your cellphone, or providing a copy to an out of town contact unlikely to be affected by the same emergency is also good practice.

A copy of the Farm Animal Emergency Preparedness Plan is available on our website, with additional information and resources.



## WHAT GOES IN A FARM EMERGENCY KIT?

### BASIC EMERGENCY KIT

- CURRENT LIST** - of all animals, including their location, feeding records, vaccinations, and tests
- TEMPORARY ID** - plastic neckbands and markers, include your name, address, and phone number
- HANDLING EQUIPMENT** - halters, cages, blankets, tools, bolt cutters (to quickly free them, if needed)
- FIRST AID KIT** - include bandages, gauze, tape, medicine, protective gloves, and antiseptic
- OTHER EQUIPMENT** - water, feed, buckets, and sanitation supplies
- RADIO & FLASHLIGHT** - battery or crank powered, with extra batteries (if necessary)

### MAKE AN EMERGENCY PLAN

Creating an emergency plan of your own can go a long way in the event of an emergency. Make sure to include contacts such as neighbours, employees, veterinarians, poison control, transportation resources, and animal care.

In the event you have to leave the property consider implementing the following:

- Visible ID and proof of ownership of all animals
- Turn off all power to buildings and homes
- Secure all large objects that may become blowing debris, such as trailers, tanks, and troughs
- Label hazard materials and put them in a safe place. Provide local fire, rescue, and emergency management authorities with information about the locations of any hazardous materials on your property.
- Store chemicals in an area that will not result in runoff or seepage if they are punctured or spilled
- Identify and remove potential fire hazards

# OUR COMMUNITY

If you're reading this you are likely already aware what an amazing community we live in. The people of the Peace Region help to make our community the generous and vibrant place that it is. At Saddle Hills County, we do our best to promote the events and activities within our community, lift-up our hard-working volunteers, and provide for the future of the people, both young and old. We are always open to more ways we can help. If you have an event you'd like to promote or idea you'd like to see made reality, please get in touch.



## KEEP UP TO DATE WITH WHAT'S HAPPENING IN SADDLE HILLS COUNTY!

You can view upcoming County and Community Events, or submit your own, on our website at [calendar.saddlehills.ab.ca](https://calendar.saddlehills.ab.ca) or by scanning the QR code above. All submitted events are added to our online events calendar and advertised through our social media channels and Central Peace Signal weekly advertising. Avid readers will likely have noticed recently an additional half-page ad specifically dedicated to County events. This service is completely free of charge for events held within Saddle Hills County or for County residents. For more information or to advertise: **(780) 864-3760 | [communications@saddlehills.ab.ca](mailto:communications@saddlehills.ab.ca)**



## SAY THANK YOU TO YOUR FAVOURITE COMMUNITY VOLUNTEERS

Every year, we host a Volunteer Appreciation BBQ, where we call on members of the community to nominate their favourite volunteers to be recognized. There is supper, door prizes, presentations, and more, to honour the contributions of these hard-working individuals. All are welcome to attend and the event is completely free of charge. This year's event is at Moonshine Lake Park on August 24, at 5:30 p.m. If you know of an exceptional individual that you think should be recognized for their generosity and community spirit, nominate them today! You can fill in a nomination form on our website at [saddlehills.ab.ca/2023volunteer](https://saddlehills.ab.ca/2023volunteer), or by scanning the QR code above, or fill in a physical copy at our County office or any of the County's four General Stores. Deadline is **August 16, 2023**.



## COMMUNITY HIGHWAY CLEAN-UP

Every year, Saddle Hills County hosts our Annual Highway Clean-up, in which dedicated community groups sign up to help rid our highways of the trash that has accumulated on the side of our highways and in our ditches. In 2023, volunteers from Savanna 4H, the Cotillion Butte Recreation Society, and Bonanza School, helped collect more than 55 bags of garbage from our roads. Thank you to everyone that participated!



## THE LATEST AGRICULTURAL NEWS

Agriculture is at the heart of our community. Keep informed of the latest moisture and crop reports for the region, as well as helpful tips and tricks on how to manage invasive weeds and pests, current funding opportunities for producers, tree care, and much more, at the dedicated Agriculture News stream on our website at [saddlehills.ab.ca/agnews](https://saddlehills.ab.ca/agnews) or by scanning the QR code. Updates are posted regularly and you can subscribe to receive notifications directly to your email inbox.



## CONNECT WITH US ONLINE

Follow us on Facebook, Instagram, Twitter, TikTok, and Youtube to stay up-to-date on events and initiatives in the County. Tag as **@saddlehillscounty** to have your posts featured on our pages or in our stories. We love the amazing moments captured by our residents and visitors! You can also follow Spring Lake Campground, Hilltop Lake Campground and Central Peace Regional Emergency Management (CPREM) Facebook pages for updates on our campgrounds and regional emergencies. However you connect with us, thank you for being involved!



# South Peace REGIONAL ARCHIVES



## Our Services



### Research

We offer 30 minutes of free research assistance to help get you started!



### Visit Us

Book an appointment on our website!



### Donate

Contribute your materials to the History of the South Peace Region.





### Get Involved

Volunteer at the Archives and play a part in heritage work.

## VISIT US

 Muskosepi Park  
10329 101 Avenue  
Grande Prairie T8V 3A8

## CONTACT US

 780-830-5105  
 [Info@SouthPeaceArchives.org](mailto:Info@SouthPeaceArchives.org)

[SouthPeaceArchives.org](http://SouthPeaceArchives.org)



# Discover the Peace

## 2023 PHOTO CONTEST



We all know that the Peace Region is a beautiful place to call home, but we want to hear your thoughts!

We ask that each applicant, along with their photographs, send a short note telling us what they love most about living in Saddle Hills County and the Peace Region.

Notes will be posted along with submissions.

**DEADLINE: AUGUST 31, 2023**

## RULES

- Adult & Youth Categories
- Up to 5 images per person
- Must be a resident of the County

## HOW TO ENTER

- Online at [saddlehills.ab.ca](http://saddlehills.ab.ca)
- Scan the QR code
- At the County Office on a USB stick



JUDGES' CHOICE

&



@shcphotocontest  
[saddlehills.ab.ca](http://saddlehills.ab.ca)

PUBLIC CHOICE

**\$150**  
1<sup>ST</sup> PLACE

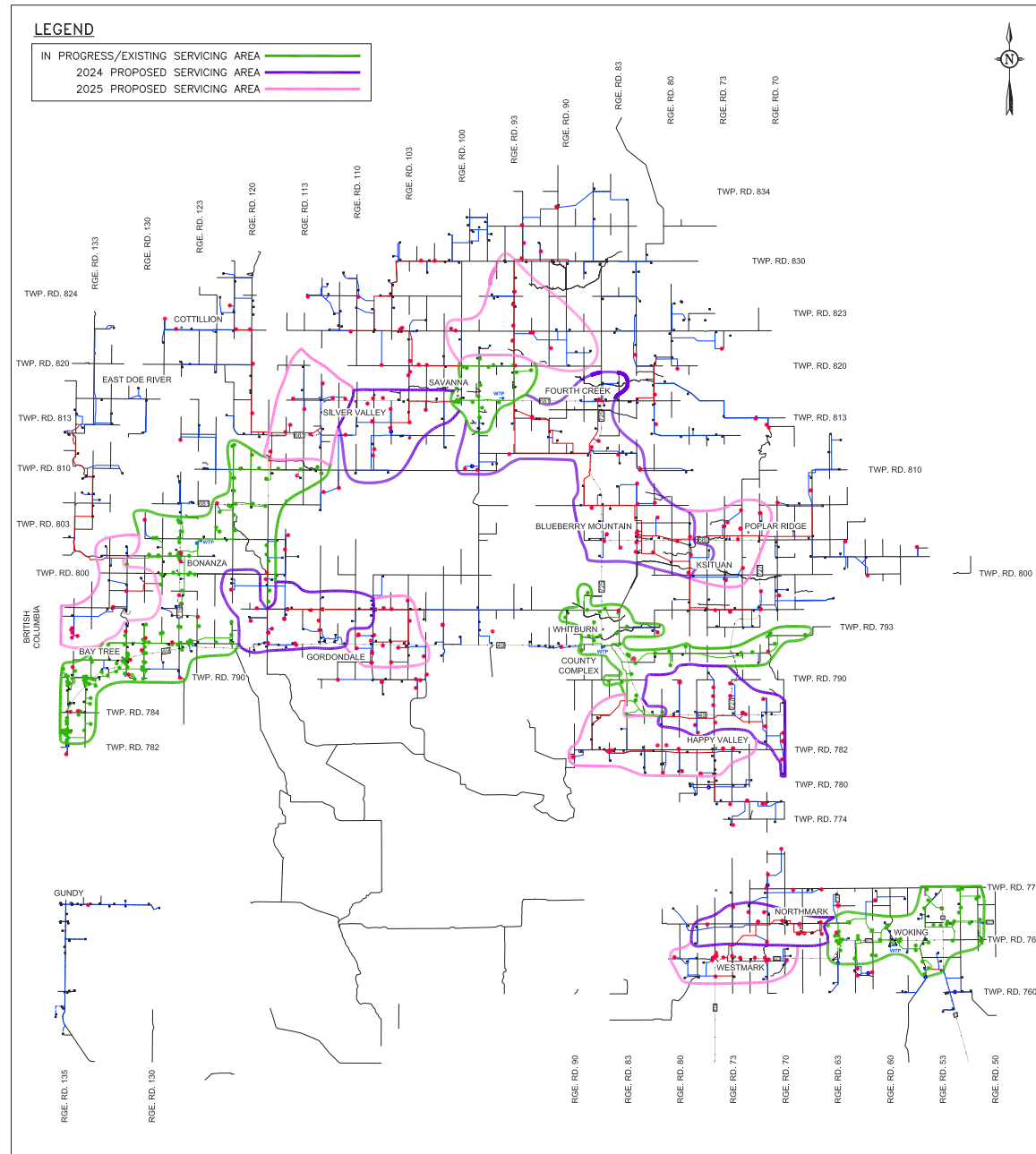
**\$100**  
2<sup>ND</sup> PLACE

**\$75**  
3<sup>RD</sup> PLACE

WINNING IMAGES ALSO FEATURED IN THE 2024 CALENDAR

# POTABLE WATER SIGN-UP

Council invites residents in the areas identified in the below map, to sign-up to be connected to the Rural Potable Water Network to have water delivered to their residence. There is no financial contribution required at the time of sign-up or once waterline is installed.



## TO APPLY FOR RURAL POTABLE WATER:

Please complete a Rural Potable Water Servicing Agreement, available on our website, by scanning the QR code, or at the County office.

Manager of Environmental Services, Darren Lubeck, at (780) 864-3760.



# Recycling 101

Saddle Hills County operates a series of Transfer Stations and Collection Sites.

Each of our Transfer Stations has collection bins outside for residents use, available 24/7. (excluding Gundy)

We do our best to keep our sites as clean and safe as possible, and we appreciate your help!

Please do not dump inappropriate materials or leave waste outside of full or overflowing bins.

Residents may also dispose of their waste at Clairmont Landfill for free, through a Landfill Tag system.

In order to obtain a tag, please register with us at (780) 864-3760 or [frontdesk@saddlehills.ab.ca](mailto:frontdesk@saddlehills.ab.ca)

See the below for lists of items that are accepted or not accepted at Transfer Stations.

Items not accepted should be disposed of in the normal garbage bins at all sites.

## ACCEPTED

- Tires
- Paint
- Metal
- Refrigerators
- Stoves
- Washers
- Dryers
- Hot Water Tanks
- Propane Bottles
- Batteries
- Plastic Grain Bags
- Agricultural Pesticide & Herbicide Containers
- Oil, including containers and filters
- Glycol (antifreeze)
- Televisions
- Computers
- Printers
- AV Equipment
- Cell Phones
- Electronic Gaming Equipment
- Portable Power Tools
- Solar Panels
- Hard Plastics
- Mixed Paper
- Cardboard
- Tin Cans
- Tinfoil
- Car Parts
- Wire

## NOT ACCEPTED

- Glass
- Cable
- Mirrors
- Plastic Bags
- Tissues Wipes
- Needles
- Metal Clothes Hangers
- Powdered Drink Containers
- Styrofoam
- Plastic Paddling Pools
- Food Wrap
- Napkins
- Toothpaste Tubes
- Nails
- Plastic House Siding
- Laminated Food Bags
- Light Bulbs
- Strappings
- Garden Hoses
- Chip Bags
- Frozen Juice Cans
- Christmas Lights
- Vacuum Cleaner Bag
- Blinds
- Cutlery
- Insulation

# DROUGHT & TREES

## *Drought and Watering Trees*

by Toso Bozic

The direct impact of drought on trees is characterized by slowed or eliminating growth, a serious health threat that can cause injury or death. Drought also impacts trees indirectly, by increasing their susceptibility to wildfire, insect pests, and disease, and overall long-term decline. Severe droughts cause widespread tree mortality across the landscape (urban, acreage, farm, county, or province-wide) with profound effects on the function of tree or forestry ecosystems and the overall environment.



Alberta's native plant communities (grass, shrubs, and trees) are well adapted for dry summer and fall, as well as for a period of prolonged drought, but still, the effect and impact of drought on trees is devastating and long-lasting. Trees that were already stressed by some other issue, like harsh winter or winterkill, poor soil quality, salt content in the soil, herbicides and mechanical damages, or insect infestations, are likely to decline even more following a drought. Watering trees is extremely important for the well-being and survival of your trees during drought conditions.

### WATERING CONSIDERATIONS

Water is scarce in the prairies, and water requirements for trees can be substantial, particularly for large trees. The amount of water a tree needs during a drought is difficult to determine. Some large trees can use nearly 200-500 gallons of water on a hot, summer day.

To understand water requirements for your tree, there are several key factors to consider before watering, which include:

- Soil types – clay vs sandy soil, poor vs rich, compacted vs natural, age of trees - newly planted vs few years old vs mature trees.
- Tree species – water-loving vs. drought resistant, shallow vs. deep-rooted, wide vs. narrow roots.
- Water Quality and Quantity– overall availability of water.
- Water Delivery System– irrigation vs. hand vs. bags.
- Time of Day – morning vs. late in the day.
- Cost of Watering.
- Mulching - using arborist wood chips, is the best way to keep moisture long term

Each of these considerations will determine how much watering you need to provide to your trees.

For the full article, or a copy of our Tree Resources Booklet, please visit our website or scan the QR code. Our Tree Specialist can also provide individual advice relevant to your needs.

#### OUR TREE SPECIALIST

For more informative articles and to contact our Tree Specialist, head to our website or scan the QR code.



## BUSINESS FEATURE

### BAYTREE BOUTIQUE



Hwy. 49, Bay Tree, AB. T0H 0A0  
(780) 851-2266  
@baytreeboutique

### Q&A WITH BREE HAMILTON, OWNER

*What gift items does the boutique carry?*

The boutique is specifically for women. We carry quite a bit of clothing, and I think it's worth noting because, if you look around, even in Dawson Creek, there's hardly any giftware store that does have clothing. That's really hard to come by, and I think people appreciate it. Our clothing is sourced from the U.S. and Europe, and it changes with every season. In response to a lot of people asking for it, we now have plus-size clothing in stock as well. Additionally, we have candles, spa items, glassware, jewellery, coffee mugs, decorative pillows, roller skates, and consigned items from artisans around our area, including handmade children's toys, cutting board, art pieces and other decorative items.

*How much traffic to the Bay Tree General Store also swings by the boutique?*

I would say the general store accounts for about 20% of the foot traffic to the boutique, and that's enough to keep the business going. People from Dawson Creek, which is only about 20 minutes from Bay Tree, come to fill up at our gas station a lot, since our fuel prices are usually 30 cents cheaper. So, wives often come along with their husbands, and they'd come in and shop.

*What has the first year of business been like?*

We sell pop and chips at our general store, and the merchandise we carry at the boutique is something new to us. So, the past year or so has been a learning curve, for sure. We have to learn what the customer wants and what actually sells. At the end of the day, you want your merchandise to move and

not gather dust on the shelves, so to speak, for a long period of time. We don't have a lot of space to hold excess inventory to begin with.

We've been changing hours as we try to figure out what works best. We're lucky that we have the general store to subsidize during our slow months – like January is, after everyone has had gone on a shopping spree for the holidays. But the boutique has to stay open so people will know when to come. If we do change our hours, which we probably will in the spring to stay open for a little longer, we'll make sure people know about it by posting it everywhere, including on social media.

*Is it difficult to operate two businesses at the same time?*

Not really. I have an excellent manager for the general store, Monique. She also has a lot of input on the boutique. She does all the ordering for the general store, and I do all the ordering for the boutique.

*If a customer wants something specific not in stock, will the boutique consider bringing the item in?*

Yes. There were ladies, for example, who had asked for turquoise jewellery, so we ordered a bunch in. There were also others who had asked for jackets – they're called shackets – so we brought them in, and they sold right away. We now keep having them in stock. So, yes, if somebody wants something specific, we'll definitely look into it.

*Adapted from an article originally published in the Central Peace Signal. The County has partnered with the newspaper to provide feature stories on some of the businesses in our community and the people who make them work.*



# COUNTY NEWS

## PLEASANTVIEW LODGE

County Council approved \$1 million in funding to the Grande Spirit Foundation to help with the completion of 26 Seniors' Self-Contained Apartment Units in Spirit River.



The Pleasantview Lodge, due to open in May 2024, will consist of a total of 40 lodge units and 52 supportive living units, including 26 on the first floor and 26 on the second floor. The lodge will provide a variety of levels of care, depending on the needs of residents, including supportive living helping residents with both complex needs that can be safely managed and those with severe dementia. There will also be a gated back courtyard on site, as well as a large lounge for social events, fitness room with physiotherapy and light exercise equipment, family kitchen, laundry room, a quiet living space, and more.

You can apply online at [www.grandespirit.org](http://www.grandespirit.org) or by contacting [seniors@grandespirit.org](mailto:seniors@grandespirit.org).

## WILDFIRES IN SADDLE HILLS COUNTY

We have seen multiple fires in Saddle Hills County since the beginning of wildfire season, back in May, including most notably the Cecil Fire, previously known as the Peace River Banks/Cleardale Fire, North of Fourth Creek, and the Boone Lake Complex, consisting of fires GWF-035 and GWF-038, in the South of the County.



Thanks to the incredible hard-working emergency responders and community members who came together to not only fight the fires, but also provide meals, support, and transport to affected residents and responders, our community was able to withstand the extended wildfire season. We are grateful to live in a community full of such kindness and support, and appreciate everyone who helped during the course of the fires, in any capacity.

In light of these recent events, the County maintains an Emergency Update Mailing List, sending updates on wildfires or other emergencies in the County directly to your email inbox. To sign up, send an email to [communications@saddlehills.ab.ca](mailto:communications@saddlehills.ab.ca). You may opt out at any time.

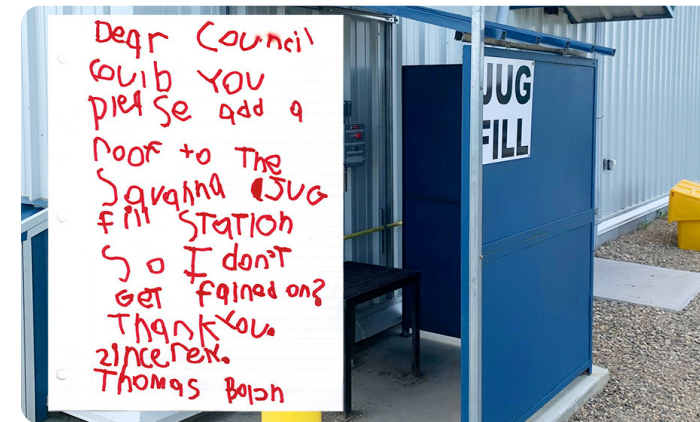
## SAVANNA SCHOOL IMPROVEMENTS

Construction work was completed at the Savanna School in late June 2023, to add some additional improvements to the grounds. These include paving for a new basketball court for the elementary playground, reinforcing the bus drop-off area, and expanding the high school student parking lot. Congratulations to all the new drivers!

The project was completed with the support of the Peace Wapiti Public School Division and Saddle Hills County. Council aided the paving installation with up to \$20,000 worth of funding towards the project. The improved facilities will not only benefit the many students of the Savanna School but the community as a whole.

## LOCAL CHILD'S WISH FULFILLED

Local Silver Valley resident, Thomas Bolch, 7, saw the need for some change in his community and decided to take action! In September 2022, Thomas wrote a letter to Council asking them to consider installing a roof on the Savanna Bottle Fill Station, located at the Savanna Water Treatment Plant, so that he and others wouldn't get rained on when collecting water. The letter reads, "Dear Council, Could you please add a roof to the Savanna Jug Fill Station so I don't get rained on? Thank you. Sincerely, Thomas Bolch"



His letter was read in by his ward Councillor, Ed Armagost, at a Regular Council Meeting on September 26, 2022. Thomas' proactive approach caused Council to respond with a letter of their own, including a motion, 'That Administration look into the costs associated with adding a roof to the Savanna Water Treatment Plant Bottle Fill and bring information back to Council'.

After reviewing costs with Administration, Council instructed that a roof be built in response to Thomas' concern. The completed roof was installed on Monday, June 22, 2023, with all residents now able to visit the Jug Fill without fear of being rained on. Thank you, Thomas!

## GRAVEL HAUL RATES

On June 13, Council approved an adjustment to the Gravel Haul Rates to help provide more accurate rates for contractors and resolve processing delays. Previously, payments could not be processed until after mid-month, slowing down the payable process. Instead of using an average rate, the County will now use the actual fuel rate from the supplier on the 1<sup>st</sup> and 16<sup>th</sup> of each month, helping to alleviate these issues.

## VET. MEDICINE BURSARY EXPANDED

Saddle Hills County's Veterinary Medicine Bursary has been expanded, to include a deadline extension to July 15, allowing students to receive their acceptance before applying. Applicants are also no longer required to be from the G5, but priority will be given to students from the region. Accepted applicants will commit to working for a veterinary clinic servicing Saddle Hills County residents following graduation.

## GRAVEL ROAD INTO SPRING LAKE

Council authorized staff to reach out to neighbouring municipalities and industry to gravel 2.4km of road on Range Road 105, to resolve some of the reported issues for campers entering Spring Lake Campground.

### WANT MORE LOCAL NEWS?

Saddle Hills County landowners can sign up for a weekly copy of the Central Peace Signal, to be delivered directly to their mailbox, or home. Call the County office at (780) 864-3760 to request your copy.



Click Before You Dig

Where's the LINE?

# BUSINESS FEATURE

## WALTERS CAT WORKS



Fourth Creek, AB.  
(780) 864-0111  
wcworks@hotmail.com  
www.walterscatworks.com

### Q&A WITH WALLY & CARRIE YANISHEWSKI, OWNERS

*Talk a little bit about the early years of business.*

**Wally:** My dad and I worked together until his passing in 2012. I started running equipment at a very young age, helping him. At 13, I started running Cat and driving truck. I was 13 when we bought our first big truck. At 15, I loaded my first Cat onto a lowboy and hauled it down the road all by myself. I would take the truck and lowboy to school. And, in my free periods, I would jump in and move Cats then come back to school. When I got home from school, I worked. I took over the business – officially on paper – in 2012; but, I have been running the business probably 20-25 years prior to that.

In the 1950s, my dad provided land-clearing services for farmers as well as built roads for Alberta Transportation. There wasn't a whole bunch of oil patch work back then. That changed with the oil boom in the 1970s. There was a lot of road construction that had to be done, and we gained a lot more work: we were building roads as well as locations for rigs to drill on.

**Carrie:** Wally's dad grew up in Blueberry Creek with all the other Yanishewski brothers, and a lot of them got into Cat work. He worked at Alaska Highway as well as for Alberta Transportation with his own machine. Wally was 19 when he bought his own Cat and scraper. That effectively doubled the capacity of the business. From that point on, they just kept building the business.

*How do you describe the business now?*

**Wally:** Right around 2000, the business really started to take off. By then, we had built our gravel pit, which provided another revenue stream for us.

We got really busy: aside from our construction business with heavy equipment, and the supply and delivery of gravel, we also farm 5,000 acres.

**Carrie:** In 2010, I decided to retire from teaching at Savanna School after 28 years to take on the office work of the business. Wally's mom, Olga, who had been doing bookkeeping and other office work for the business, had turned 74 and decided to slow down.

*Talk a little bit about the gravel pit.*

**Wally:** We have an 80-acre gravel pit about 22 kilometres east of our shop location. So much work and investment had gone into the construction of the gravel pit: from taking all the vegetation off to taking 3-6 feet of overburden – that's all the useless clay on top – off; it was quite a major undertaking and a long process before you see gravel being trucked out and get your revenue back. A custom crusher that comes into our pit costs us \$300,000 per visit. Unless customers prefer to haul the gravel themselves with their own truck, we deliver gravel to our customers, which consist mainly of oil companies and farmers. The supply of gravel is another stage of work in the oil patch. Oil companies build lease roads and plant sites, and they gravel their roads. As I already mentioned, the cyclical nature of the oil industry can sometimes be challenging; it's something we have had to deal with. At one point, the gravel pit got us through two years of an oil down cycle. That's the work ethic he and his dad had.

**Carrie:** I can't emphasize enough how hard-working the Yanishewskis are. Wally is out the door usually by six in the morning. He comes home for lunch, has a quick 20-minute nap, then goes out again until supper time. After supper, he goes out yet again until it's dark. That's been his MO for the 35 years we've been married. That's the work ethic he and his dad had.

*Adapted from an article originally published in the Central Peace Signal. The County has partnered with the newspaper to provide feature stories on some of the businesses in our community and the people who make them work.*

## MEET THE STAFF

Every issue we introduce you to the talented and committed individuals responsible for all the important day-to-day activities that make Saddle Hills County run. From seasonal weed inspectors, to grader operators, administrative staff, directors, and all those in-between we are incredibly grateful for their efforts and support.

Just like our community, our staff come from all walks of life, and have varied interests and hobbies. We hope that by getting to know a little bit about them in these pages we can share some of our common experiences and continue to make Saddle Hills County the incredible place it is.



### HOPE MCNALLY, SAFETY PROGRAM ADMINISTRATOR

Hope recently began her role as Safety Program Administrator, in May, 2023, after working in healthcare for many years, most recently with Grande Prairie Palliative Care. She moved from the East Kootenays with her husband Rob, a Peace Region native, in 2000, and has been here ever since. From the beginning, she has been awed by the generosity, compassion, and kindness of her neighbours, many of whom showed up to help them move in, despite not knowing the family. The McNallys enjoy draft teams, trail riding, and racing anything else they can attach a motor to, including their latest Pull Truck, 'Black Betty'.



### BRETT SAUDER, AGRICULTURAL FIELDMAN

Brett began his position as Agricultural Foreman in May, 2023, after attending the University of Alberta for a Bachelor of Science degree in Crop Sciences. He previously worked as an industrial herbicide applicator, while completing his studies.

He has lived in Saddle Hills County nearly his entire life and was raised on his family's grain farm in Fourth Creek. In his spare time, he enjoys cooking and hockey, and has recently taken up gardening.

## SAVANNA SPLASH PARK



 SAVANNA REC PLEX  
81378 RANGE ROAD 100, SAVANNA, AB.

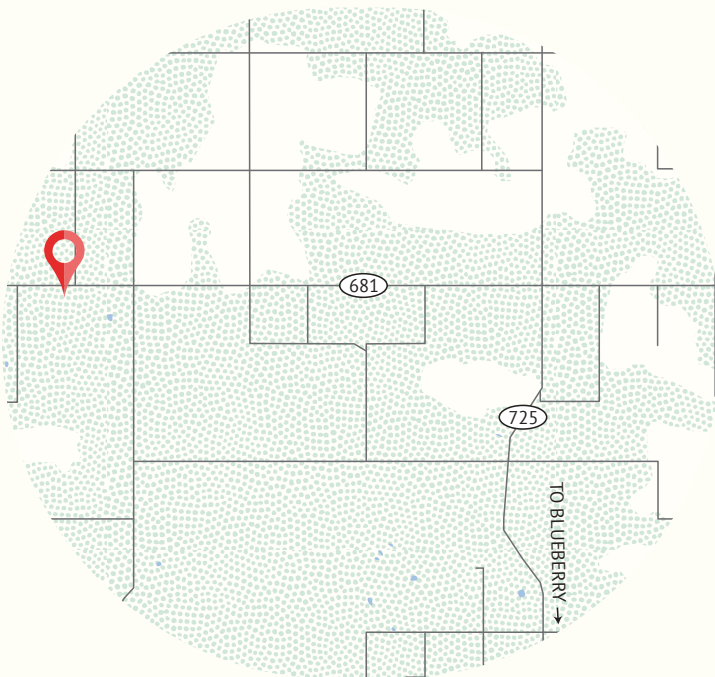
### SUMMER 2023 HOURS

Daily from 10 a.m. - 8 p.m.,  
including both weekdays and weekends

### SUMMER 2023 CONCESSION

Every Wednesday from 10 a.m. - 3 p.m.  
There will be ice-cream  
and a lunch option available.

Currently there is no washroom available on site,  
but one is planned for the not too distant future.



## BAY TREE MARKET ON 49

The Bay Tree Market on 49 is back for the 2023 season, at the Bay Tree General Store outdoor rink on Highway 49. Follow them on Facebook or Instagram @baytreemarketon49.

- Weekly Markets: **Tuesdays - 11 a.m. - 1 p.m.**
- Special Markets: **August 18 - 4 p.m. - 8 p.m.**

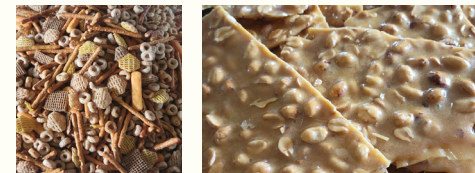
There will also be a Christmas Market at the Bonanza Hall, on **Saturday, October 21, 2023**, from 10 a.m. - 4 p.m.



## BAKING BY TREENA

Treena Underwood, owner of Baking by Treena, makes her famous Nuts and Bolts and other sweet and savory treats from her home in Bay Tree, Alberta. She can be found at local farmers markets throughout the region, including the Bay Tree Market on 49.

(250) 219-3878 | [ronunderwood40@yahoo.com](mailto:ronunderwood40@yahoo.com)  
[@bakingbytreena](https://www.instagram.com/bakingbytreena)



## PEACE RIVER PETALS

Peace River Petals offers a simple start to the growing season by taking the guesswork out of beginning your flower garden. Shi can be found at your local Northwestern Alberta Farmers' Markets, including Bay Tree Market on 49.

(780) 353-0007 | [peacriverpetals@gmail.com](mailto:peacriverpetals@gmail.com)  
[@peacriverpetals](https://www.instagram.com/peacriverpetals)



## WILHELMINE SADLIER, DOTERRA WELLNESS

doTERRA, based out of the US, sells essential oils, dietary supplements, and other related products. Wilhelmine has been a user and distributor of doTERRA products, also known as a Wellness Advocate, since 2020. You can find her at the Bay Tree Market on 49.

(250) 719-6160 | [minasadlier@hotmail.com](mailto:minasadlier@hotmail.com)



## VISIT OUR BUSINESS DIRECTORY

Discover more Saddle Hills County entrepreneurs  
[@saddlehillscounty](https://www.instagram.com/saddlehillscounty) | [saddlehills.ab.ca](https://www.saddlehills.ab.ca)  
(780) 864-3760 | [communications@saddlehills.ab.ca](mailto:communications@saddlehills.ab.ca)

IF YOU WOULD LIKE  
YOUR BUSINESS OR  
ANY OTHER PLACE  
FEATURED PLEASE  
GET IN TOUCH!



Welcome to our ongoing series, Municipal Mythbusters, helping you to better understand municipal processes and answer some of the most frequently asked questions.

**Have a myth you'd like us to bust? Get in touch!**

### **DID YOU KNOW?**

While Assessment and Taxes are related they are two very different processes. "Assessment" is the process of assigning a dollar value to a property according to market value. This value is then used to calculate the amount of taxes owed. "Taxation" is the process of applying a tax rate to a property's assessed value. This determines the taxes payable. Tax rates are determined by Council annually and available in the current Tax Rates Bylaw. Below are the answers to some commonly asked questions received by County residents.

### **FAQS:**

**Q:** Will hooking up to the rural potable water network increase my assessment value?

**A:** If you have an existing residence in the County, utilities, such as water, power and sewage, are already included in the current assessed value of your home. Therefore, hooking up to the County's rural potable water network will not create an immediate increase in the value of your property.

**Q:** Why does an Assessor need to visit my property?

**A:** An Assessor visits your property to accurately determine the physical characteristics of the property, such as age, quality, and the use of land and any improvements.

**Q:** Why do we have annual assessments?

**A:** The Municipal Government Act requires that all property in Alberta be assessed each year. Annual assessments ensure that changes in the market place are captured annually, protecting tax payers from large market fluctuations over time. Property assessments are used to distribute taxes in a fair and equitable way. This means that owners of property with similar market values will pay similar amounts of property taxes.

**Q:** What is market value?

**A:** To establish Market Value, Assessment in Alberta considers each property's unique characteristics. These are the same characteristics that a home buyer would consider, such as location, services, size, layout, age, finish, quality, garages, sundecks, condition of improvements and land, and recent sales of similar properties.

You can contact the Assessment Department directly with any questions at **(780) 506-0101**



Junction of Highway 49 and Highway 725, RR 1, Spirit River, Alberta, Canada, T0H 3G0

Phone: (780) 864-3760 | Fax: (780) 864-3904 | Toll Free: 1 (888) 864-3760

Monday to Friday 8:15 AM to 4:30 PM



[www.saddlehills.ab.ca](http://www.saddlehills.ab.ca)



[@saddlehillscounty](https://www.facebook.com/saddlehillscounty)



[@saddlehillsab](https://twitter.com/saddlehillsab)



[@saddlehillscounty](https://www.instagram.com/saddlehillscounty)