

Volume 4, Issue 3
Winter, 2021



Saddle Hills County

LIVING

INSIDE

Your Council	3
Seize the Opportunity	5
Geocaching	7
Community Signs	9
2021 Photo Contest Winners	11
County News	13
Bonanza ASP Update	16
Bursary Recipients	17
Our History - Origins	19
Ditching Information	20
Welcome to the County	22
Saddle Hills Businesses Rock	23
FAQs: Ask Christine	25



YOUR COUNCIL



September 20, 2021 saw voters turn out, in record numbers, to choose their Council representatives for the next 4 years in this year's Municipal Election. At the Organizational Meeting, held October 26, the new Council met to elect a Reeve and Deputy Reeve to serve for the following 12 months, as per guidelines set out in the Municipal Government Act (MGA).

Saddle Hills County Council is responsible for providing good and accountable government to the people of the County. Council works closely with the Chief Administrative Officer (CAO), Cary Merritt, and Administration to serve this goal.

They meet on the 2nd and 4th Tuesday of every month. All Regular Council Meetings are open to the public and take place at the County Office. For more information on our Council and to read a little bit more about our Councillors head over to our website.

Welcome!

Ward 1: Bay Tree, Gordondale, Gundy - Danny Roy

Ward 2: Bonanza, Cotillion, Doe River - Alvin Hubert

Ward 3: Savanna, Silver Valley - Kristen Smith

Ward 4: Fourth Creek - Ed Armagosty

Ward 5: Blueberry, DeVale, Whitburn - Willis Fitzsimmons

Ward 6: Happy Valley - Gerry Richard

Ward 7: Woking, Northmark, Westmark - Don Hoffart

Reeve (2021-2022): Alvin Hubert

Deputy Reeve (2021-2022): Danny Roy

Bloom Yoga

WEEKLY CLASSES: Wednesday Evenings at the Rycroft AG Centre
Beginner/Gentle Yoga, Yin Yoga, Yoga Nidra, Vinyasa Flow or Online Classes

FB: @bloomyoga11 | bloomyoga.setmore.com



SEIZE THE OPPORTUNITY



SOLAR ENERGY

PETROCHEMICAL MANUFACTURING

AGRICULTURAL COMMODITY PROCESSING

MINING



GRANDE PRAIRIE
DAWSON CREEK
FORT ST. JOHN



49 2



WOKING
RYCROFT
DAWSON CREEK



TC ENERGY NORTH AMERICAN
PIPELINE NETWORK
COASTAL GASLINK PIPELINE



12,719 billion m³ of marketable natural gas*
*145 years of Canada's 2012 consumption

2,308 million m³ of marketable NGLs

179 million m³ of marketable oil

Central Peace Regional Water Project

CONSTRUCTION OF NEW RAW WATER SUPPLY INTAKE
36KM OF NEW RAW WATER PIPELINE



Regional Warehousing, Transportation, Logistics



No Business Tax or Licensing Fees



Low Provincial and Local Taxes



Cost-competitiveness



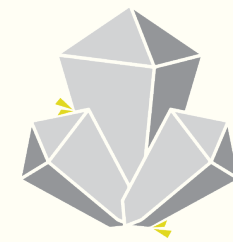
42,445

REGIONAL POPULATION

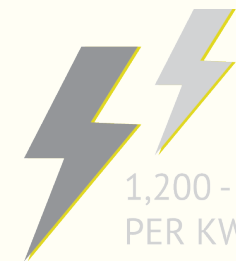


30,772

REGIONAL WORKFORCE



LITHIUM
VANADIUM



1,200 - 1,250 KWH OF ENERGY
PER KW, PER YEAR



581 FARMS

535,279 ACRES
OF FARMLAND



PEAS
29,141 Metric Tonnes



CANOLA
15,765 Metric Tonnes



Junction of HWY 49 & HWY 725
RR1, Spirit River, AB T0H 3G0
Cary Merritt, CAO: 780.864.3760



@saddlehillscounty



@saddlehillscounty



@saddlehillsab



www.saddlehills.ab.ca

GEOCACHING

A Quick Guide

Geocaching is an outdoor recreational activity in which participants use a Global Positioning System (GPS) receiver, or mobile device (smartphone), as well as other navigational techniques to hide and seek containers, called Geocache's or cache's, at specific locations marked by coordinates. Caches can be found all over the world!

A typical cache is a small waterproof container including a logbook, which Geocacher's will sign with their established Geocache codename, showing the date when they found the cache., and sometimes instructions or other keepsakes left behind by previous finders. Once explored the cache is to be placed back where found for the next lucky hunter.



During the Summer of 2021 Saddle Hills County became an official Geocaching participant! There are now Geocache kits hidden at various locations throughout the County, with the hope of increasing tourism to the area and encouraging residents to get out and discover their local area.

With the help of some creative local residents and artisans, Billi Comstock, Louey Isaac and Hollie Lillico, we have placed the handcrafted caches at some beloved local spots for finders to explore:

BAY TREE, BONANZA, WOKING, COTILLION PARK, HILLTOP LAKE & SPRING LAKE

We will be expanding the program into the new year so keep an eye open for new Geocache locations and announcements

FULLY LICENSED MECHANIC

TRUE BALANCE TIRES

780-351-2660

OPEN MONDAY - FRIDAY: 9:00 - 12:00 & 1:00 - 6:00
(CLOSED HOLIDAYS)



COMMUNITY SIGNS

Registered non-profit societies and community groups in Saddle Hills County are encouraged to apply for a new grant, starting this year, for Community Signage. The application deadline is October 15, 2021, and grants will be considered for the 2022 budget.

Groups who receive approval for the grants will be responsible for ordering and having the signs installed (either by themselves or the sign company) as well as any, and all, licensing, leasing, permits or land purchases.

The signs have a pre-approved design, in line with the other Saddle Hills County signs for consistency, and include the possibility of adding amenity symbols, if desired ie. gas, park, shopping, hiking.

Council is hoping the signs will help contribute to community pride and promote tourism opportunities throughout the County.

Application forms are available on the County website.

New for 2022



BUSINESS FEATURE

BURNT RIVER RANCH



Pastured pork and chicken (grass-fed and grass-finished), eggs, laying breed birds and hatching eggs.

780.296.4550
@burntriverranching

Where do you think your passion to start this came from?

I grew up on my grandparents' farm in the Badheart, where they raised a commercial herd of cattle as well as horses, sheep and a few pigs. I was also in various 4-H projects as a kid and young adult. When they retired, unfortunately it wasn't an option to pass that farm down, but that farm meant absolutely everything to me, and I wasn't about to let that dream die there. I always knew that somehow, some way we would get our own land and start pursuing that life again. We also have our horses, and even though they aren't a "homestead" animal, they're really the original driving force in us acquiring land. To be able to have complete control over their everyday care and training was the first thing, and then the other goals we are pursuing branched off of that. Over the years, Cole and I also had our fair share of nay-sayers and people telling us to bring our goals "back to reality" and settle for less. Those comments were like fuel to our fire, because they pushed us even harder to chase this life. Some people are meant to be immersed in numerous things at once, and that describes us perfectly.

Q&A WITH BRITNEY JACOB, OWNER

Why become ranchers? You had to start from nothing and work your way up. Why get into this lifestyle? I guess, to some, it doesn't make a lot of sense – for us to choose a lifestyle that doesn't really have a clock-in or clock-out, where the list of projects never seems to end, where you're always worrying about the weather. Some jobs allow you to leave your work at work, and even take a vacation by simply putting in a request for time-off.

So, why would we choose to become ranchers when we have so many "easier" options? This lifestyle has always been incredibly important to both of us. We wanted to raise our family the same way that I grew up. There are so many values instilled in kids by growing up on a farm – a sense of community, family that helps each other out, kids with a work ethic and knowing responsibility from a young age. Hard work doesn't scare us, and we love the freedom we have on our ranch.

Becoming debt-free has been a huge motivator for us, and this way of life seemed like a logical next step for us. We have control over our destiny, and we see a direct result of our actions. We enjoy having a life with a true purpose. Yes, there are challenges, but we know that every single thing we do is one step closer to a better, more efficient operation. Nothing in life comes easy, so why bother chasing the so-called easy life when we could do more and create something for the future generation.

What has been the best reward thus far?

- Becoming more connected with our neighbours. We all rely on each other in some way, and each of us have something to offer one another. We would all drop anything at the drop of the hat and inconvenience our own lives to offer aid.
- Being told that we inspire other people. We are so thrilled to have people follow us on our journey, and all we ever want is for people to feel like it's possible to go against society's norms and pursue their greatest passions.
- Seeing a bare hay field become an actual working homestead. Sometimes we forget how far we have actually taken our property in the past few years.

Originally published in the Central Peace Signal. The County has partnered with the newspaper to provide feature stories on some of the businesses in our community and the people who make

2021 Photo Contest Winners



1st Place - Adult People -
Britney Jacob



2nd Place - Adult People -
Katrina/Brooklyn Sadler



3rd Place - Adult People -
Brittany Dolen



1st Place - Adult Places (Overall Winner) - Britney Jacob



1st Place - Youth Places -
Gracia Ventimiglia



2nd Place - Youth Places -
Ella Sorensen



3rd Place (Joint)- Youth Places -
Kayleigh Moore



3rd Place (Joint)- Youth Places -
Gracia Ventimiglia



1st Place (Joint) - Youth People -
Willis Ventimiglia



1st Place (Joint) - Youth People -
Willis Ventimiglia



2nd Place - Adult Places - Jo Ann Edey



3rd Place - Adult Places - Anna Richard



2nd Place - Youth People -
Willis Ventimiglia



3rd Place - Youth People -
Mabel Ventimiglia

COUNTY NEWS

TRAIL CAMERA INSTALLED AT BONANZA TRANSFER STATION

In June Council instructed Administration to proceed with installing a trail camera for video surveillance at the Bonanza Transfer Station Collection Site, following a series of break-ins. This has now been completed.

DOE RIVER SLIDE REPAIR

July 2-3rd, 2020 saw a large rainstorm that caused severe damage to the road by the Doe River Bridge, near Range Road 134. Temporary repairs have now been completed, however a more permanent solution is required.

Council directed Administration to proceed with the repairs at an estimated cost of \$600,000, with funds to come from the Infrastructure Developmental Capital Reserve, which will then be replenished when the Disaster Recovery Funds have been received.

BISON ADDED TO V.S.I PROGRAM

Based on recommendation from the Agricultural Service Board bison will now be included in the County's Veterinary Services Incorporated Program. The program splits costs with the ranchers in our community for pregnancy checks, semen tests, post-mortems and herd/health disease investigations. To benefit from the program ranchers enter a VSI agreement with the County, with membership renewed annually.

SADDLE HILLS COUNTY DECLARES AGRICULTURAL DISASTER

Due to prolonged drought conditions throughout the majority of the County, which has led to low crop yield and quality as well as reduced feed

sources, Saddle Hills County declared a state of Agricultural Disaster at the September 14, 2021 Council Meeting.

With light snow cover and lack of soil moisture in the spring, seasonal rainfall was needed to ensure pastures and crops stayed healthy. The drought conditions are causing concern about the availability of quality water sources going into fall/winter. Grain producers specifically are looking at low yields and high grain costs, which is leading to crippling cancellation fees on grain contracts.

Devin Dreesen, Minister of Agriculture and Forestry, released a statement on July 15, 2021 indicating the push for the activation of the federal AgriRecovery Program. These funds can assist producers in offsetting the cost of added expenses accrued during the season.

'A Declaration of a State of Agricultural Disaster is designed to heighten awareness and collaboration among producers, industry and provincial and federal governments. The County joins a growing number of rural municipalities in Western Canada that have declared states of emergency to draw political attention to the critical conditions of fields and pastures and the availability of livestock feed'

- Alvin Hubert, Reeve

WOKING HAMLET BEAUTIFICATION

A 4 cubic meter water credit was provided to residents of the Hamlet of Woking, for the months of June and July, to assist in hamlet beautification.

COMMUNITY HEALTH NURSE

Saddle Hills County Council have instructed Administration to look into the possibility of hiring a Community Health Nurse for the area, and the costs associated with this. The aim of this is to give local residents easier access to healthcare, and eradicate some of the wait times associated with the overburdened Spirit River healthcare system.

SENIOR HOUSING UPDATE

Construction on the new \$24 million Supportive Living and Long-Term Care Facility slated for the Town of Spirit River is expected to begin early in Spring 2022, at the latest, according to Grande Spirit Foundation Manager, Steve Madden.

The facility will sit between 51st and 52nd Street, on land provided by the G5 municipalities, which include Birch Hills County, the MD of Spirit River, Saddle Hills County, the Town of Spirit River and the Village of Rycroft.

The new Spirit River Seniors Lodge is also planned to include a 24 unit, self-contained apartment building next door, which will replace the current, 60 year old, Pleasantview Lodge.



The Grande Spirit Foundation has conducted an extensive public engagement process, attempting to ensure as much public input as possible, into the design of the project. Three sessions were held in 2021 - January 28, February 4 and February

11 - during which the public was provided the opportunity to discuss how the project, when complete, will promote healthy living and sustainable communities as it relates to the site context and common amenities of the lodge, as well as neighbourhoods surrounding the project.

It is hoped that by providing multiple levels of housing and healthcare the project will help keep families together and reduce the need to send people to other facilities outside of the Central Peace community. The ultimate aim is for local seniors to be able to age in their own community, surrounded by their loved ones.

WANT MORE LOCAL NEWS?

Saddle Hills County landowners can sign up for a weekly copy of the Central Peace Signal, to be delivered directly to their mailbox or home. Call the County office at **780.864.3760** to request your copy.



The  of the Community

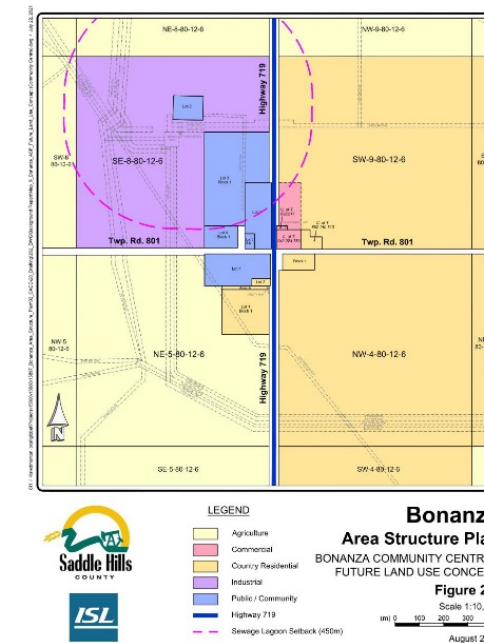
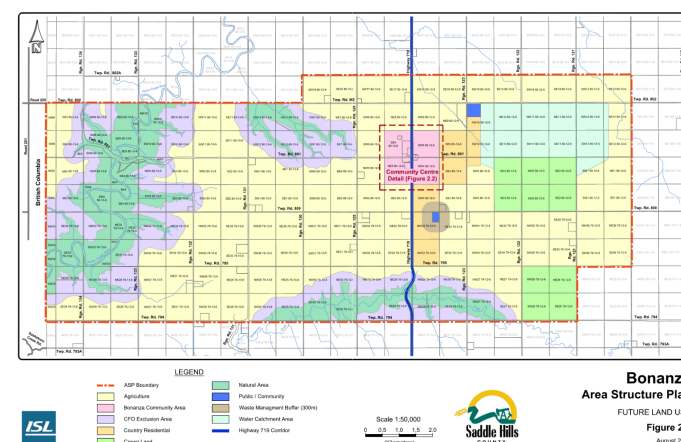
GENERAL STORE, HOT MEALS, LIQUOR, BAY TREE MARKET ON 49, OUTDOOR ICE RINK
 HWY 49, Bay Tree, AB | (780) 353.2485

BONANZA ASP UPDATE

PHASE 2 AREA STRUCTURE PLAN ENGAGEMENT SUMMARY

INTRODUCTION

Over several months, the County prepared an Area Structure Plan (ASP) for the Bonanza Area. The purpose of the ASP is to help guide long-term future growth and development of the area.



ENGAGEMENT PROCESS

Beginning in Spring 2021, residents of Saddle Hills County were provided an opportunity to participate in the first phase of the project through an Online Learning Q&A Session (May 27) and an Online Survey (May 13 - June 10). This phase of the project focused on gathering feedback regarding residents' vision for the plan area and what they felt was important to consider when planning for the future of the area. Feedback gathered during this phase was reviewed and used to inform the development of a draft ASP.

Phase 2 of the project, which commenced in the Summer of 2021, focused on the review of the draft ASP. Copies of this were made available to residents for review on the County's website, and through an Online Survey (available September 19 - October 5). This survey provided an opportunity

for participants to provide specific feedback on elements of the ASP. In addition to the Online Survey, an in-person Open House was held at the Bonanza Community Hall on September 23, from 3-7pm, so residents could ask questions and provide their feedback.

This information was collected, from both the



open house and survey, and feedback published on the County website. The full summary is available online or a copy can be requested from the County office. The ASP was adopted at the October 12, 2021 Regular Council Meeting.

BURSARY RECIPIENTS



1.



2.



3.



4.



5.



6.



7.



8.

1. Rhegan Burton (*Deputy Reeve Kristen Smith*)
Institution: Griffith University, QLD, Australia
Course: Bachelor of Dental Health Science, Masters of Dentistry

2. Wyatt Knelson (*Deputy Reeve Kristen Smith*)
Institution: Grande Prairie Regional College, AB
Course: Business Administration

3. Lauren Konashuk (*Deputy Reeve Kristen Smith*)
Institution: Grande Prairie Regional College, AB
Course: Bachelor of Science Biology Major

4. Brandon Mitchell (*Willis Fitzsimmons*)
Institution: Grande Prairie Regional College, AB
Course: Bachelor of Science in Immunology and Infection

NOT PICTURED

Tessa Hergot - Grande Prairie Regional College, AB - Bachelor of Science in Registered Nursing

Hayley McNaught - Thompsons Rivers University, BC - Bachelor of Arts Communications Major

Kade Singer - Grande Prairie Regional College, AB - Bachelor of Arts English Major

5. Sierra Mitchell (*Willis Fitzsimmons*)
Institution: Grande Prairie Regional College, AB
Course: Educational Assistant Program

6. Monika Peachey (*Reeve Alvin Hubert*)
Institution: Alberta College of Massage Therapy
Course: Massage Therapy Program

7. Alexandra Pullishy (*Lawrence Andruchiw*)
Institution: University of Alberta, AB
Course: Bachelor of Education/Teacher Education North (TEN)

8. Evan Pullishy (*Lawrence Andruchiw*)
Institution: Grande Prairie Regional College, AB
Course: Bachelor of Science in Immunology and Infection

Bursary Information

Saddle Hills County

Saddle Hills County Councilors presented bursaries to a number of local students who are going on to seek post-secondary training and education this year, at a Regular Council Meeting on August 24, 2021. The bursaries totaled \$2,800 per student with funding coming jointly from Saddle Hills County and the Northern Alberta Development Council (NADC).

Candidates must meet the following requirements in order to be eligible for a Saddle Hills County student bursary:

- Be a resident of Saddle Hills County, for a minimum of one year, and have been a resident in Alberta for a minimum of one year prior to the application date
- Be enrolled, full-time, in a post-secondary program recognized by Alberta Advanced Education
- Be committed to living and working in Northern Alberta following completion of their program
- Have reasonable prospects for employment in Northern Alberta after graduation

Candidates will be required to:

- Write a paragraph, of at least 500 words, describing their chosen field of study
- Supply two letters of reference
- Complete the bursary application

To apply for next years bursary program please submit a bursary application on our website before June 1, 2022. Completed applications can be sent via mail, email or fax.



Christmas Hamper Program

Accepting donations until December 15th

Donations can be made at the County office, Savanna School, Bonanza School, Bay Tree Store, Blueberry General Store and Woking General Store. Please go to our website to see a list of the required food items (food items to be dropped off at the County office).

Do you know someone who would benefit from one of our yearly Christmas Hampers? Nominate yourself or another at the County website.

www.saddlehillscounty.ab.ca | 780.864.3760

OUR HISTORY

Origins

Adpated from a piece by Chase Coli

Oral histories tell us that Saddle Hills County and the surrounding area was the traditional homeland of the Dane-zaa, but they were driven north of the Peace River by the Plains Cree, who were absorbing territory in their westward migration.

The Peace River was given its name following the North American smallpox epidemic which struck the Cree in 1781, when a peace treaty was arranged between the two warring peoples, which identified the land north of the river as Dane-zaa territory, while the Cree held the land to the south.

A ceremonial pipe was smoked in celebration at Dunvegan, and the river was deemed a space for the two peoples to meet and trade. Despite this an animosity remained, according to Henry Somers Somerset's testimony 'The Land of the Muskeg'.

On July 6, 1899, Natooses, a leader of the Dane-zaa, entered into Treaty 8 with Commissioners James Ross and J.A. McKenna. The Commissioners completed a tour of the Northwest Territory to create adhesions to the Treaty for other First Nations in the area, however, much of the Spirit River area was missed.

J.A. Mcrae was sent by the crown to complete the remaining adhesions, and in 1900 the Canadian government declared the area open for development.

The area was a hub for European traders, missions, settlers and companies. The Hudson's Bay Company

and the Revillon Brothers had operations along the river, connecting the small settler communities that formed in the area. The fur trade was the first major industry to establish itself in the the region and has become a part of Alberta's history of staples economies.



The B.C. gold rush brought prospectors north to pan the vast river system. The Oblate Fathers of the St. Charles Roman Catholic Mission established a mission at Fort Dunvegan in 1867 to convert the Indigenous population, but as those populations dwindled at the turn of the 20th century, the mission moved south to the Spirit River area.

The 1872 Dominion Lands Act allowed settlers to buy 160 acres of land in the west for \$10. There are records of settlers occupying the land that would become Spirit River from as early as 1892, but plans formally establishing a settlement began in 1907.

DITCHING INFORMATION

A FRIENDLY REMINDER TO SADDLE HILLS COUNTY RESIDENTS:

PERMITS ARE REQUIRED FOR ANY WORK DONE IN COUNTY DITCHES OF RIGHTS-OF-WAY

It is the responsibility of a landowner to contact the County prior to any proposed work in the County's Rights-of-way. This includes items like approach construction or modifications, new or deepening of existing ditches, brushing, or any other work on undeveloped rights-of-way.

Rights-of-way are used for a variety of purposes, they provide access to land and provide space for utilities to be located, such as powerlines, telephone/internet lines and natural gas lines. Rights-of-Way may also have high pressure gas lines and oil pipelines running across them.

PERMITS ARE FREE TO OBTAIN FROM THE COUNTY

The purpose of the permit is to ensure that the person completing any work in the County's rights-of-way is aware of any hazards like pipelines, powerlines and any other utilities and that the proposed work complies with Alberta Environment laws. It ensure that work does not interfere with the utilities, and that drainage changes don't affect the adjoining land owners.

There are fines and penalties applicable, from the County and Province, for completing work in the County's rights-of-way without a permit. The fines range from \$100 - \$10,000, including the possibility of a court appearance.

If you wish to perform any work in Saddle Hills County's rights of way you can request a permit, FREE of charge, from our Operations Department, details below. If you need more information, or have any questions, please call the office at 780.864.3760.



780.864.3760



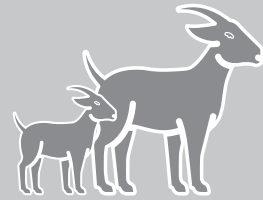
operations@saddlehills.ab.ca



www.saddlehills.ab.ca

BUSINESS FEATURE

THE GOAT PATCH



Fourth Creek, AB
(780) 864.5126
thegoatpatch@gmail.com
@TheGoatPatch15
www.thegoatpatch.com

Q&A WITH SHAUN & MALLORY KAISER, OWNERS

How long have you been raising goats?

We initially started raising goats in 2014, in Hines Creek, where we purchased a small cross trip (herd) of miniature cross dairy goats from our neighbour. In 2015, we got serious and purchased our first 12 Kiko goats. We moved to Saddle Hills County in 2017 to grain farm with Mallory's family and continue our Kiko goat breeding program.

How did you get interested in goats?

I (Mallory) was driving home from work listening to CBC Radio, when Alberta Goat President Association Laurie Fries was discussing the benefits of goats. My interest peaked, and Shaun and I started attending conferences. The evidence that convinced us that goats were the way to go was Canada does not have enough goat meat to supply the demand. Currently, Canada imports most of its goat meat from New Zealand. Goat meat is the main red meat consumption of 60% of the world's population, and new Canadians have increased that demand. We were willing to fill that demand.

You specialize in Kikos. What is the difference between a Kiko and a "regular" goat?

There are around 300 distinct breeds of goats in the world. The New Zealand Kiko goat was a project in the 1980's. Once New Zealand was discovered, people from all over the world came and brought goats with them. This eventually led to thousands of feral goats in New Zealand. In the 1980's, a couple from New Zealand captured the feral goats and started to cull the ones that did not have the makings of a great goat. They kept

the ones that were distinctive for their maternal instinct, parasite resistance, hoof care, meat gain, milking ability, survivability – everything you would want in a breed that does not require a lot of work. For us that was an attractive attribute.

Do these different breeds require different care than the goats most producers have in Canada?

The Kikos were developed to be a low maintenance breed. They are proven to handle the cold winters of Canada. Goats are not native to Canada. Many of the breeds have a harder time with our climate and require more attention.

You have sires listed on your website? Do you sell them or "rent them out"?

Due to our biosecurity/closed herd policy, we do not rent out our sires. We list them so people can refer to who the sire is when looking at buying breeding stock from us.

Where do you see your business in five years?

I see our business being a Western Canada leader in the Kiko meat breed and working closely with USA Kiko leaders to help expand the Kiko breed and influence in Canada.

What is the difference between a "100% New Zealand Kiko" and a "purebred Kiko"?

New Zealand Kiko means that the animal bloodlines can be traced to the original group from New Zealand, making the animal 100% New Zealand. Purebred means the animal has, at least, one outside influence that was not a New Zealand Kiko. The animal is then registered at 94% Purebred Kiko. Even if you have a New Zealand buck and a Purebred doe, the offspring will only be able to register as 94% Purebred.

Originally published in the Central Peace Signal. The County has partnered with the newspaper to provide feature stories on some of the businesses in our community and the people who make them work.

WELCOME TO THE COUNTY



JOHN FRIESEN

John has recently joined the County as our new Director of Corporate Services. Originally from Saskatoon John moved to Calgary at 18 to further his education, receiving his CPA designation in 2002. John has been in financial and accounting roles most of his career, including 15 years as Controller at Scott Land & Lease Ltd. John and his wife Gloria have five children and seven grandchildren and currently reside in Spirit River.

"I am very fortunate to be working in the Peace Country and with a great team in Saddle Hills County. I look forward to meeting many of you."



CHAD TEMPLE

Chad joined us in September 2021, taking on the position of IT Systems Support Technician. Chad brings with him his experience in internet technology with the oil industry and is looking forward to working with the staff at Saddle Hills County. Chad currently lives in Grande Prairie with his wife.



GREG HEINRICKS

Director of Operations Ron Pelensky announced in September that Greg Heinricks is the new Public Works Supervisor. Greg worked for the County in the Public Works Department from 2012 to 2014. Before his work with the County Greg spent 16 years in oil field construction. He and his wife have lived on their farm in Silver Valley since 1994. He says he looks forward to serving the County in his new capacity.

SHC BUSINESSES ROCK

Saddle Hills County has a strong and dynamic business community comprised of small, medium and big operations in agriculture, oil and gas and forestry, as well as a number of small businesses serving these industries and the general public. The County has partnered with the Central Peace Signal newspaper to provide feature stories on some of the businesses in our community and the people who make them work. You can find the full business features on our website (search 'Business Features'). We will be showcasing some of these businesses in each issue of Saddle Hills County Living.

If you own a business in Saddle Hills County and would like to advertise with us, free of charge, please contact our Communications Coordinator at the County office on 780.864.3760, ext. 116, through social media or at communications@saddlehills.ab.ca.

ANNE'S GREENHOUSE



Anne's Greenhouse is a fixture in the lives of serious gardeners and amateurs alike, throughout Saddle Hills County and the Central Peace. Once you turn off Highway 49 and go north on Secondary Highway 725 (Moonshine Lake Road), you travel to the intersection where the Fourth Creek Community Centre is located. From this point on there are signs at every corner, about 7 miles from this point. Always open the Monday before Mother's Day, 7 days a week (even holidays) from 10am to 8pm.

TWP 820 & RR 80, Fourth Creek, AB
780.351.2215 | annececilia@gmail.com | @Anne'sGreenhouse (public group) or @annecstewart (private)

BRETON PLUMBING & HEATING



A locally owned and operated plumbing and heating company located in Saddle Hills County. Specializing in service, new construction and renovations! Red Seal Certified Plumber and Class B Gasfitter.
24/7 Emergency Call-out Available.

PO Box 45, Gordondale, AB T0H 1V0 (by appointment)
780.864.9673 | bretonplumbing@gmail.com | @bretonplumbing

BUTTERY BITES CARMELS



Before Buttery Bites Caramels came to fruition in late 2004, owner Heather Porritt had searched for the perfect caramel that would fill her with excitement. Alas, it never happened. So, after a bit of research and experimenting, she developed a caramel recipe that she could be proud of. With only five simple ingredients Heather created an extraordinarily creamy caramel, just like grandma used to make. There are no half measures used when preparing these indulgent treats.

Bay Tree, AB
780.353.3055 | butterybites@gmail.com | www.butterybites.com | @ButteryBitesCaramels

CHINOOK VALLEY GOLF COURSE



Chinook Valley offers a limited number of exclusive camping sites for the full summer season. The stalls are fully serviced and club membership is required. Unfortunately they are full at this time but have started development on a new, exclusive area.

West of Woking, 76329 HWY 731, AB
780.774.3838 | kaylareiman@liva.ca | www.chinookvalley.ca | @chinookvalley

ESSENTIALS 2 GRIEF TRANSFORMATION



Kimberly Talmey is a certified mental health coach, Assist Suicide Prevention Coach, Grief and Loss Coach and Life Purpose and Spiritual Coach. She also has a degree in Biblical Counseling specializing in Trauma Counseling, Complex Grief and Loss Counseling, Grief Counseling, Grief Share and Trauma Recovery Groups.

Home Office in Woking | Oliver's Funeral Home | Essentials Cremations, Grande Prairie
780.814.1442 | kimberly@kimberlytalmey.com | kimberlytalmey.com | @kimberlytalmey

FAQ'S: ASK CHRISTINE



Christine Elliott is a beloved resident and employee of the County, manning our reception and phone lines and helping with all of our residents' questions and enquiries.

If you have a question Christine is always happy to help you find the answer!

DO I NEED A DOG LICENCE IN THE HAMLET OF WOKING?

Yes! All dogs within the hamlet are required to be licenced. Please contact the County office to purchase an annual license for the four-legged members of your family.

HOW DOES THE WATER CISTERN SUBSIDY WORK?

The County provides a subsidy to residents to help cover the costs of installing a new water cistern system, covering 75% of the cost of install, up to a maximum of \$5,000. To apply please fill out the Water Subsidy Application on the County website.

CAN I ARRANGE FOR A SNOWPLOW TO CLEAR MY DRIVEWAY?

Yes! Residents can have their driveways plowed by signing a Snowplow Agreement. Senior and disabled residents need take no further steps, all other residents are required to purchase snowplow flags. Agreements are available in the office or on our website.

DOES THE COUNTY OFFER FINANCIAL SUPPORT FOR CHILDCARE?

Yes! We provide subsidies to residents to help cover the cost of childcare. For details on the program, to fill in the Childcare Subsidy Form or find out if you qualify please get in touch or check out the County website.

If you have a question you'd like Christine to answer please call us on 780.864.3760 or email communications@saddlehills.ab.ca and your question may be featured in the next issue.



HERE AT SADDLE HILLS COUNTY WE LOVE TO SUPPORT LOCAL TALENT

Do you have an amazing photograph or video of the County you'd like to share? Saddle hills County is now available on Instagram. Tag [@saddlehillscounty](https://www.instagram.com/saddlehillscounty) to have your work or business featured on our page.



Junction of Highway 49 and Highway 725, RR 1, Spirit River, Alberta, Canada, T0H 3G0

Phone: (780) 864-3760 | Fax: (780) 864-3904 | Toll Free: 1 (888) 864-3760

Monday to Friday 8:15 AM to 4:30 PM



www.saddlehills.ab.ca



[@saddlehillscounty](https://www.facebook.com/saddlehillscounty)



[@saddlehillsab](https://twitter.com/saddlehillsab)



[@saddlehillscounty](https://www.instagram.com/saddlehillscounty)